

Multi-Use Paths
Multi-use Paths are paved and located within the roadway boulevard (in place of a sidewalk) and are shared by both pedestrians and people on bikes.

Recreational Trails
Recreational Trails are located through parks, adjacent to rivers/ ravines or along hydro corridors. Can be paved or unpaved and are shared by pedestrians and bikes.

Minor Recreational Trails
Minor Recreational Trails are paved paths through parks or connections between two streets.

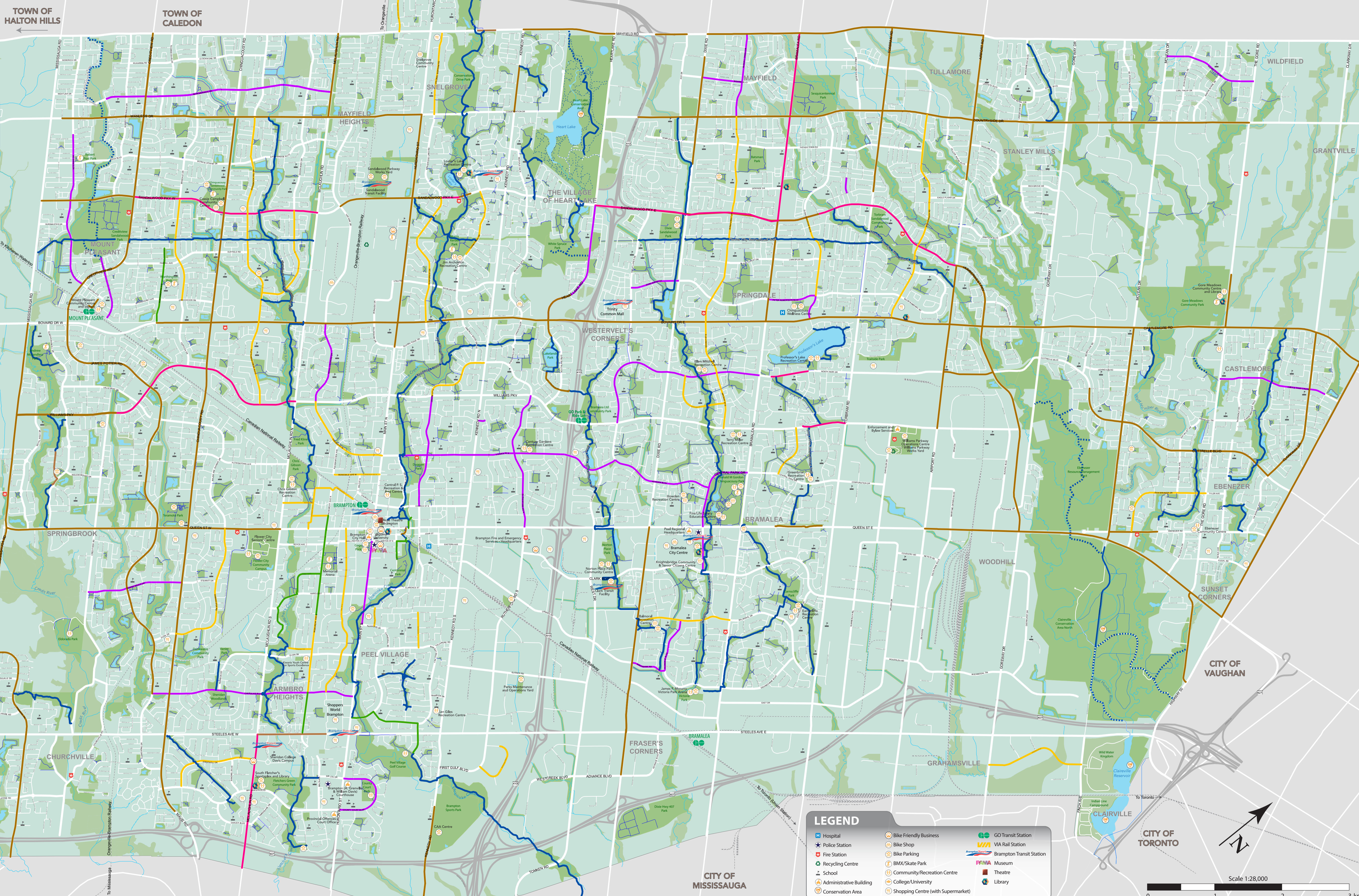
Boulevard Bike Paths
Boulevard Bike Paths are paved and located within the roadway boulevard. These paths are adjacent to side-walks and intended for people on bikes exclusively.

Bike Lanes
Bike Lanes are traffic lanes that are reserved for people on bikes only. These lanes are marked and signed (bicycle symbol and diamond).

Signed Routes
Signed routes are identified as routes that are preferred for bicycling. These routes are typically signed along quiet residential streets.

Urban Shoulder
Urban Shoulder signed routes are identified as preferred bicycling routes that also have a designated area (painted) that can be used for cycling or short term parking.

Disclaimer
BRAMPTON CYCLING GUIDE
2022 Edition
Published by the Corporation of the City of Brampton
2 Wellington St West, Brampton On L6Y 4R2
Mapping completed by the Location Intelligence & Data Visualization Team
Recreational Trails with a natural surface are not maintained during the winter months



LEGEND

Hospital	Bike Friendly Business	GO Transit Station
Police Station	Bike Shop	VIA Rail Station
Fire Station	Bike Parking	Brampton Transit Station
Recycling Centre	BMX/Skate Park	Museum
School	Community/Recreation Centre	Theatre
Administrative Building	College/University	Library
Conservation Area	Shopping Centre (with Supermarket)	

CITY OF TORONTO

CITY OF VAUGHAN

CITY OF MISSISSAUGA

Scale 1:28,000

0 1 2 3 km