

Smoke Alarms

Working smoke alarms save lives. However, people who are deaf or hard of hearing may not be able to depend on the traditional smoke alarm to alert them to a fire.



for People who are Deaf or Hard of Hearing

Install smoke alarms in every bedroom. They should also be outside each sleeping area and on every level of the home. For added safety, interconnect all the smoke alarms. If one sounds, they all sound. This gives people more time to escape.

SAFETY TIPS

- Smoke alarms and alert devices are available for people who are deaf or hard of hearing.
- Strobe lights flash when the smoke alarm sounds. The lights warn people of a possible fire.
- When people who are deaf are asleep, a pillow or bed shaker can wake them so they can escape. The shaker is activated by the sound of a smoke alarm.
- When people who are hard of hearing are asleep, an alert device that uses a loud, mixed, low-pitched sound can wake them. They may find a pillow or bed shaker helpful. These devices are triggered by the sound of the smoke alarm.
- Research the products and select the ones that best meet your needs.

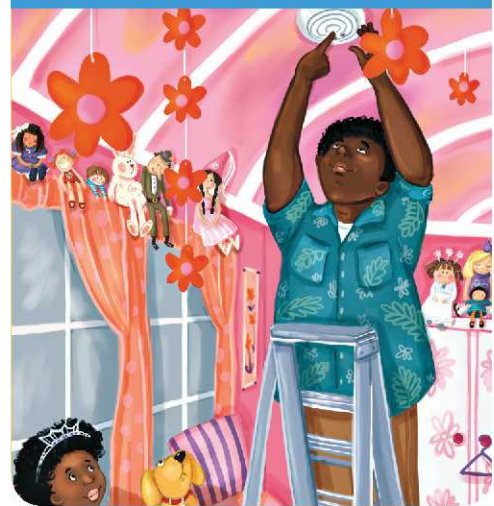
WHERE TO FIND EQUIPMENT

Search home improvement store websites or use a general search engine to look for strobe light smoke alarms. BRK/First Alert, Gentex, and Kidde brands offer this type of smoke alarm. Find smoke alarm accessories such as pillow or bed shakers, transmitters, and receivers at lifetonesafety.com, safeawake.com and silentcall.com. Choose devices that have the label of a recognized testing laboratory.

FACT

Home fire sprinklers keep fires small. This gives people more time to escape in a fire.

AND DON'T FORGET...
Test all smoke alarms at least once a month using the test button.



NATIONAL FIRE PROTECTION ASSOCIATION
The leading information and knowledge resource on fire, electrical and related hazards



brampton.ca
firelife@brampton.ca
905.458.5580

BramptonFire
 @BramptonFireES

BRAMPTON