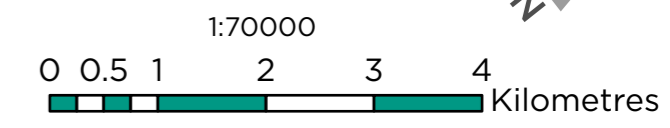


- ⊙ Urban Centres
- ⊙ Town Centres
- Primary Urban Boulevards
- - Secondary Urban Boulevards
- Corridors
- - - Planned Corridors
- Support Corridor
- Urban Growth Centre
- ⊙ Primary Major Transit Station Areas
- - - Planned Major Transit Station Areas
- Gateways
- Employment Areas
- Community Areas
- Natural Heritage System
- Regional Urban Boundary

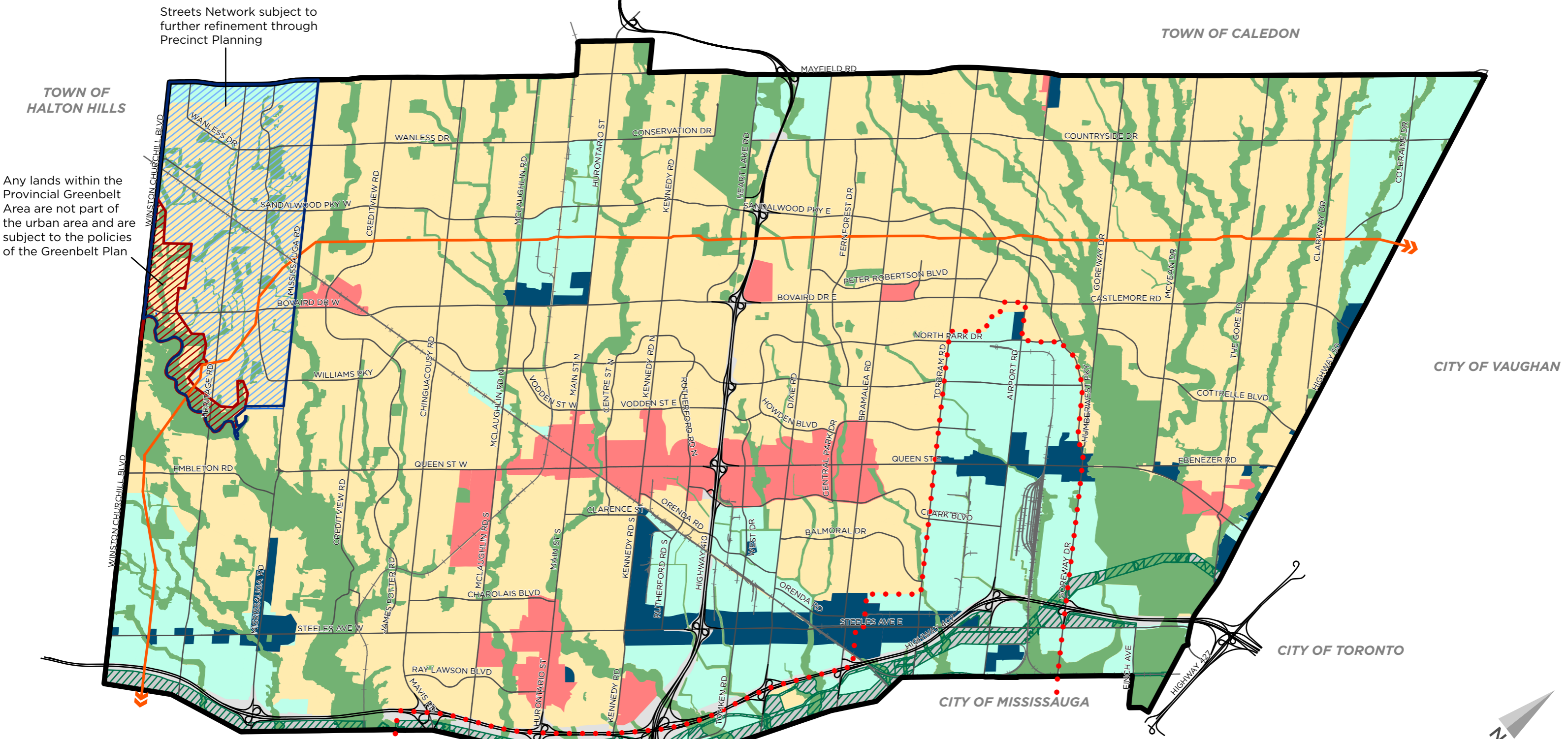
**Base Map Features**

- Railway
- Major Streets
- Provincial Highways / Goods Movement Corridors
- ▨ Parkway Belt West



Date: December 2022  
 Planning, Building and Economic Development  
 Brampton Plan

This map forms part of the Official Plan of the City of Brampton and must be read in conjunction with the text, other schedules and secondary plans. The boundaries and alignments of designations and overlays on this schedule are approximate and are not intended to be scaled.



Streets Network subject to further refinement through Precinct Planning

Any lands within the Provincial Greenbelt Area are not part of the urban area and are subject to the policies of the Greenbelt Plan

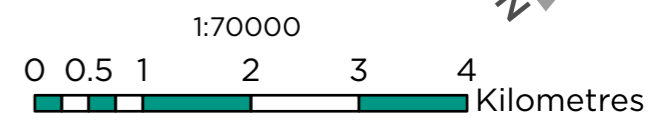
- Designations**
- Mixed Use
  - Neighbourhoods
  - Employment
  - Mixed-Use Employment

- Overlays**
- Natural Heritage System
  - Parkway Belt West

- Overlays**
- Lester B. Pearson International Airport (LBPIA) Operating Area
  - Greenbelt Plan
  - TransCanada Pipeline

- Base Map Features**
- Heritage Heights Secondary Plan Area
  - North West Brampton Development Area

- Base Map Features**
- Railway
  - Highway
  - Major Streets



Date: December 2022  
 Planning, Building and Economic Development  
 Brampton Plan

This map forms part of the Official Plan of the City of Brampton and must be read in conjunction with the text, other schedules and secondary plans. The boundaries and alignments of designations and overlays on this schedule are approximate and are not intended to be scaled.

Streets Network subject to further refinement through Precinct Planning

TOWN OF HALTON HILLS

TOWN OF CALEDON

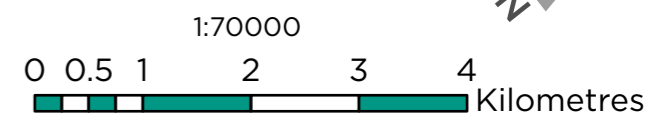
CITY OF VAUGHAN

CITY OF TORONTO

CITY OF MISSISSAUGA

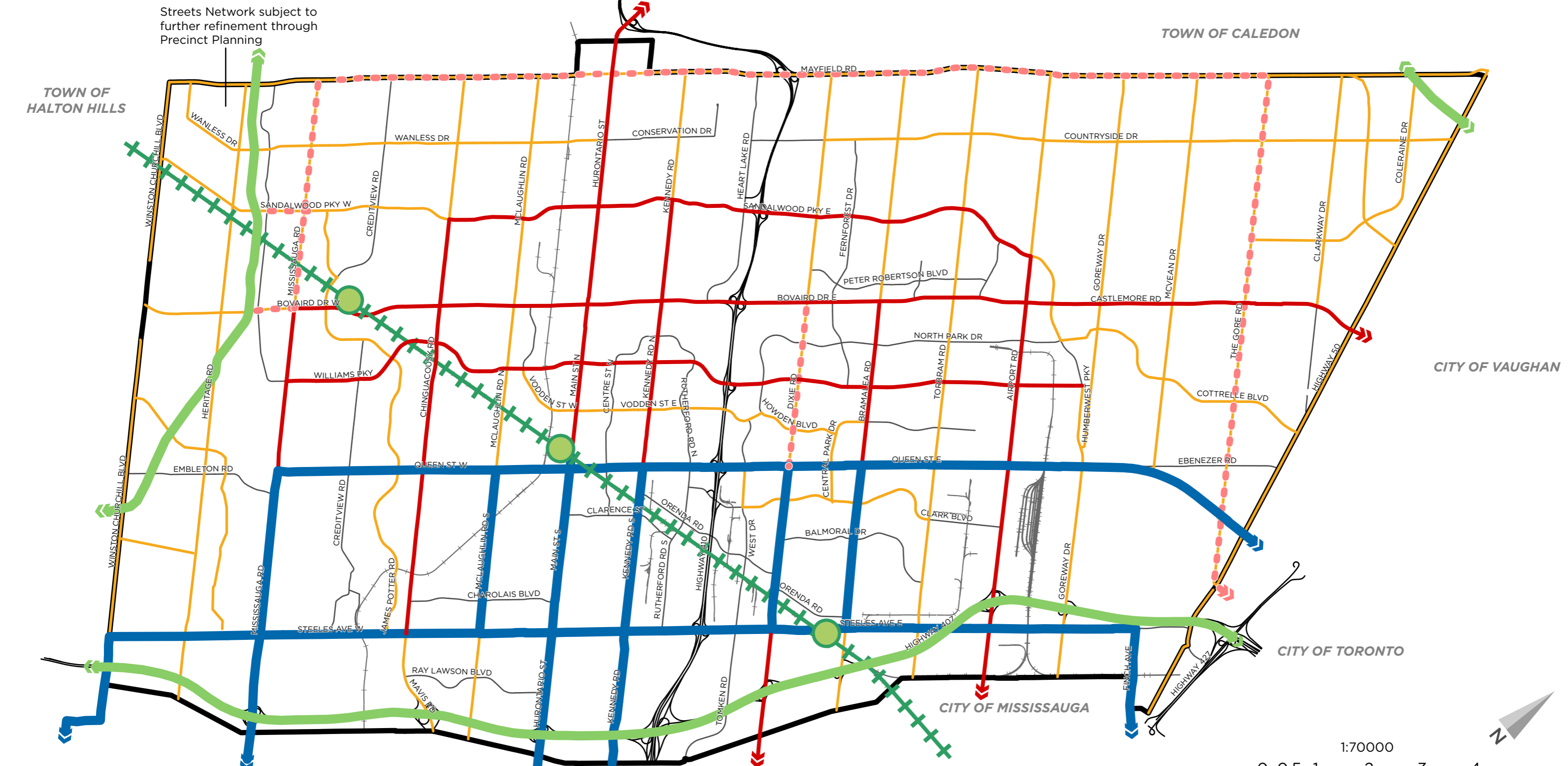
- Protected Bike Lane or Cycle Track
- Bike Lane or Buffered Bike Lane
- Regional Connection
- Existing Network Link
- Multi Use Path
- Recreational Trail

- Base Map Features**
- Railway
  - Highway
  - Major Streets



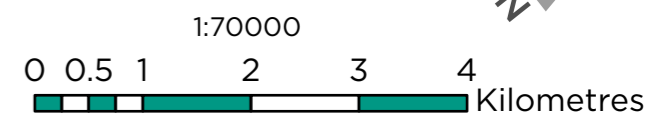
Date: December 2022  
 Planning, Building and Economic Development  
 Brampton Plan

This map forms part of the Official Plan of the City of Brampton and must be read in conjunction with the text, other schedules and secondary plans. The boundaries and alignments of designations and overlays on this schedule are approximate and are not intended to be scaled.



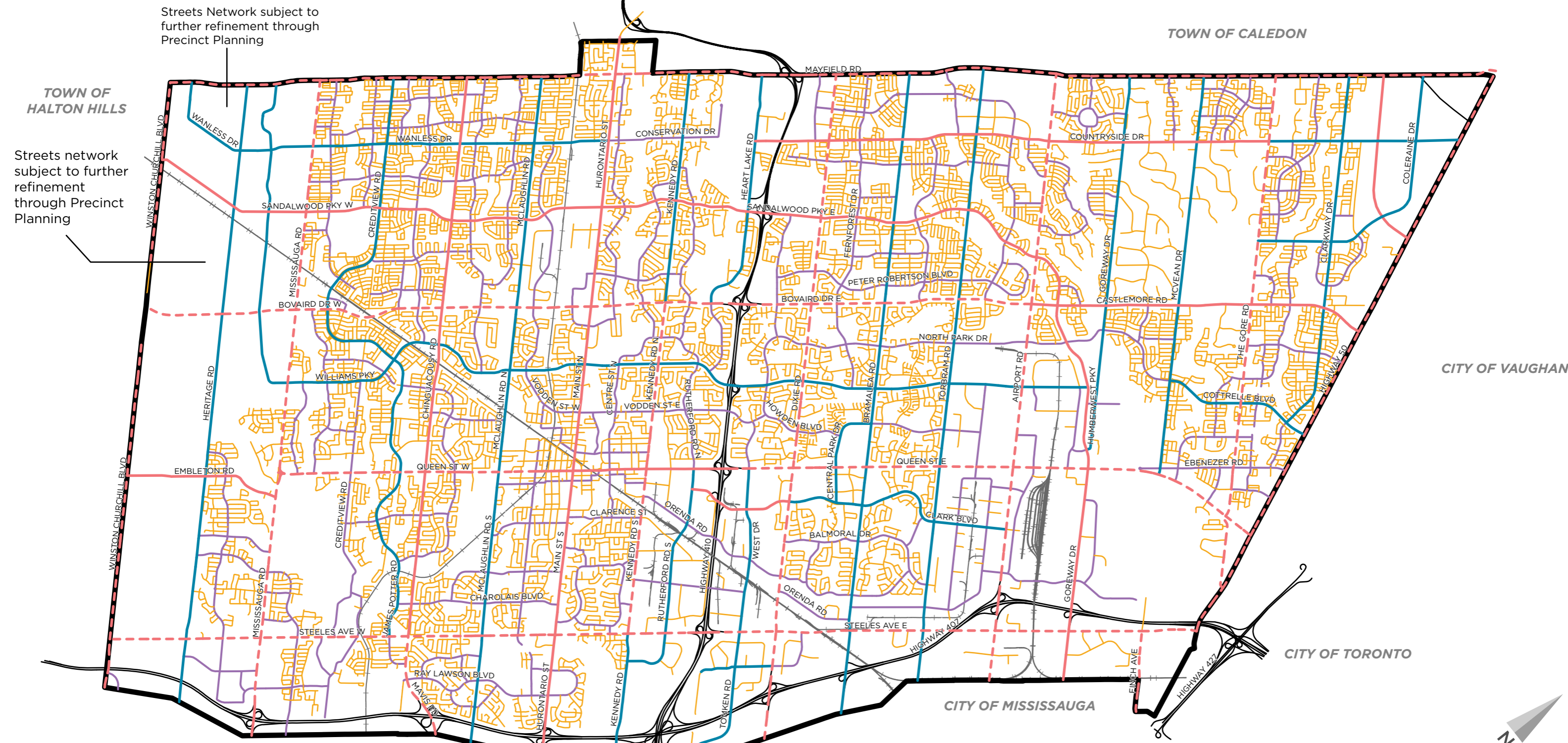
- Higher Order Transit (BRT or LRT)
- Rapid Transit (Priority Bus or Züm)
- - Potential Future Rapid Transit (Priority Bus or Züm) (Subject to further study)
- Priority Bus Support Corridor
- Provincial Transitway
- + Regional Rail (GO Train)
- GO Train Station
- Future GO Train Station

- Base Map Features**
- + Railway
  - Highway
  - Major Streets



Date: December 2022  
Planning, Building and Economic Development  
Brampton Plan

This map forms part of the Official Plan of the City of Brampton and must be read in conjunction with the text, other schedules and secondary plans. The boundaries and alignments of designations and overlays on this schedule are approximate and are not intended to be scaled.

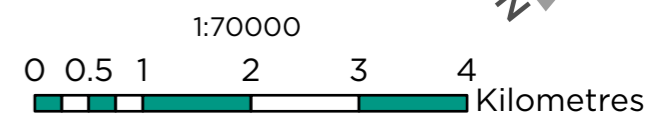


Streets Network subject to further refinement through Precinct Planning

Streets network subject to further refinement through Precinct Planning

- Functional Street Classification**
- Major Arterial (City)
  - Major Arterial (Regional)
  - Minor Arterial
  - Collector
  - Local

- Base Map Features**
- Railway
  - Highway



Date: December 2022  
 Planning, Building and Economic Development  
 Brampton Plan

This map forms part of the Official Plan of the City of Brampton and must be read in conjunction with the text, other schedules and secondary plans. The boundaries and alignments of designations and overlays on this schedule are approximate and are not intended to be scaled.

Streets Network subject to further refinement through Precinct Planning

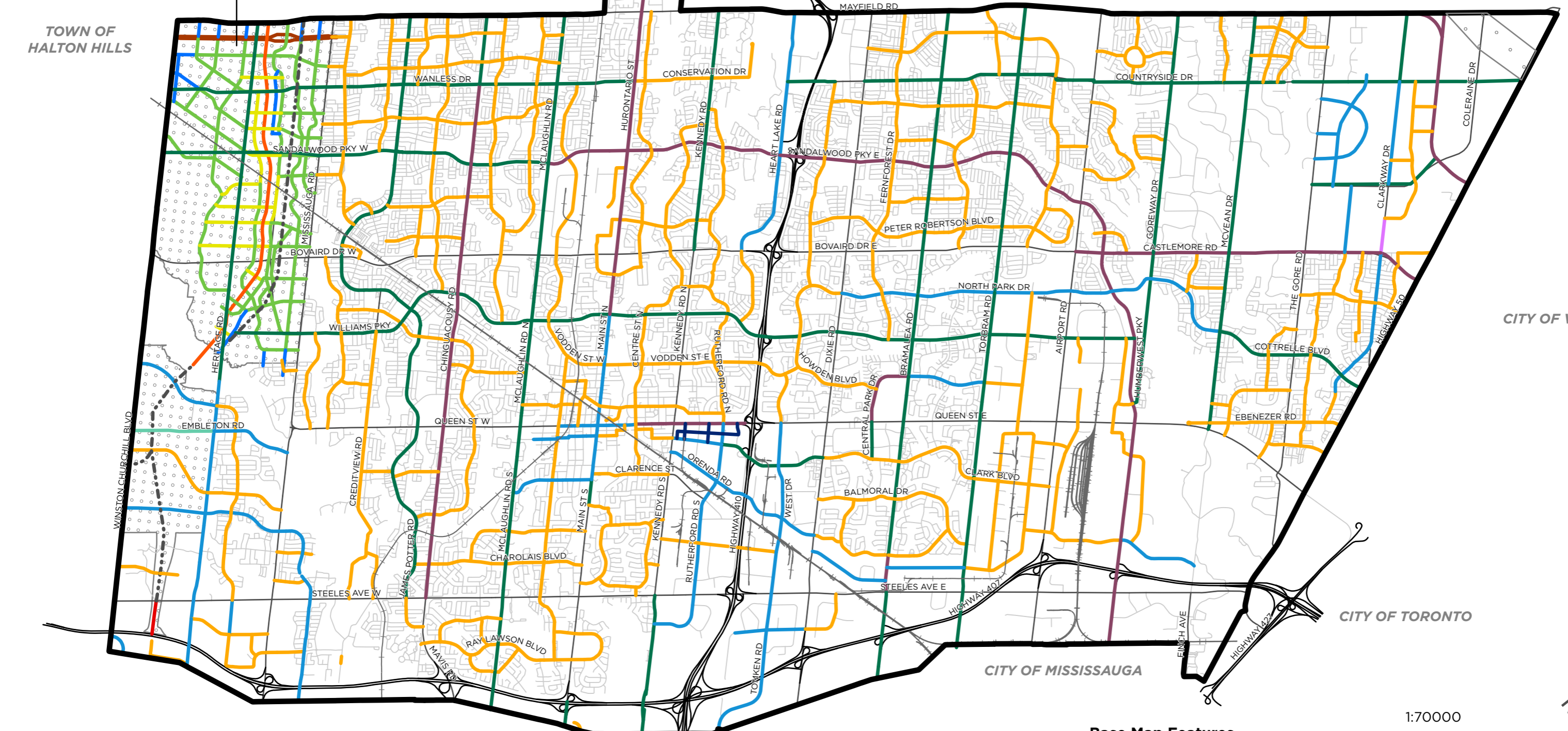
TOWN OF HALTON HILLS

TOWN OF CALEDON

CITY OF VAUGHAN

CITY OF TORONTO

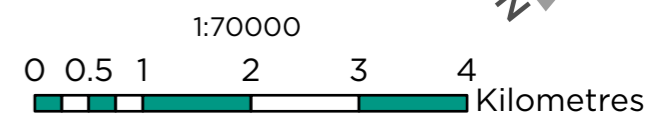
CITY OF MISSISSAUGA



- 20 Metres
- 20-25 Metres
- 23-26 Metres
- 25-30 Metres
- 26-30 Metres
- 30 Metres
- 31.5 Metres
- 30-35 Metres
- 35-65 Metres
- 36 Metres
- 40-45 Metres
- 50-100 Metres
- 95-115 Metres
- 40-100 Metres
- ◻◻◻ Corridor Protection Area

**Base Map Features**

- +— Railway
- Highway
- Regional Roads
- Local Roads



Date: December 2022  
 Planning, Building and Economic Development  
 Brampton Plan

This map forms part of the Official Plan of the City of Brampton and must be read in conjunction with the text, other schedules and secondary plans. The boundaries and alignments of designations and overlays on this schedule are approximate and are not intended to be scaled.

Streets Network subject to further refinement through Precinct Planning

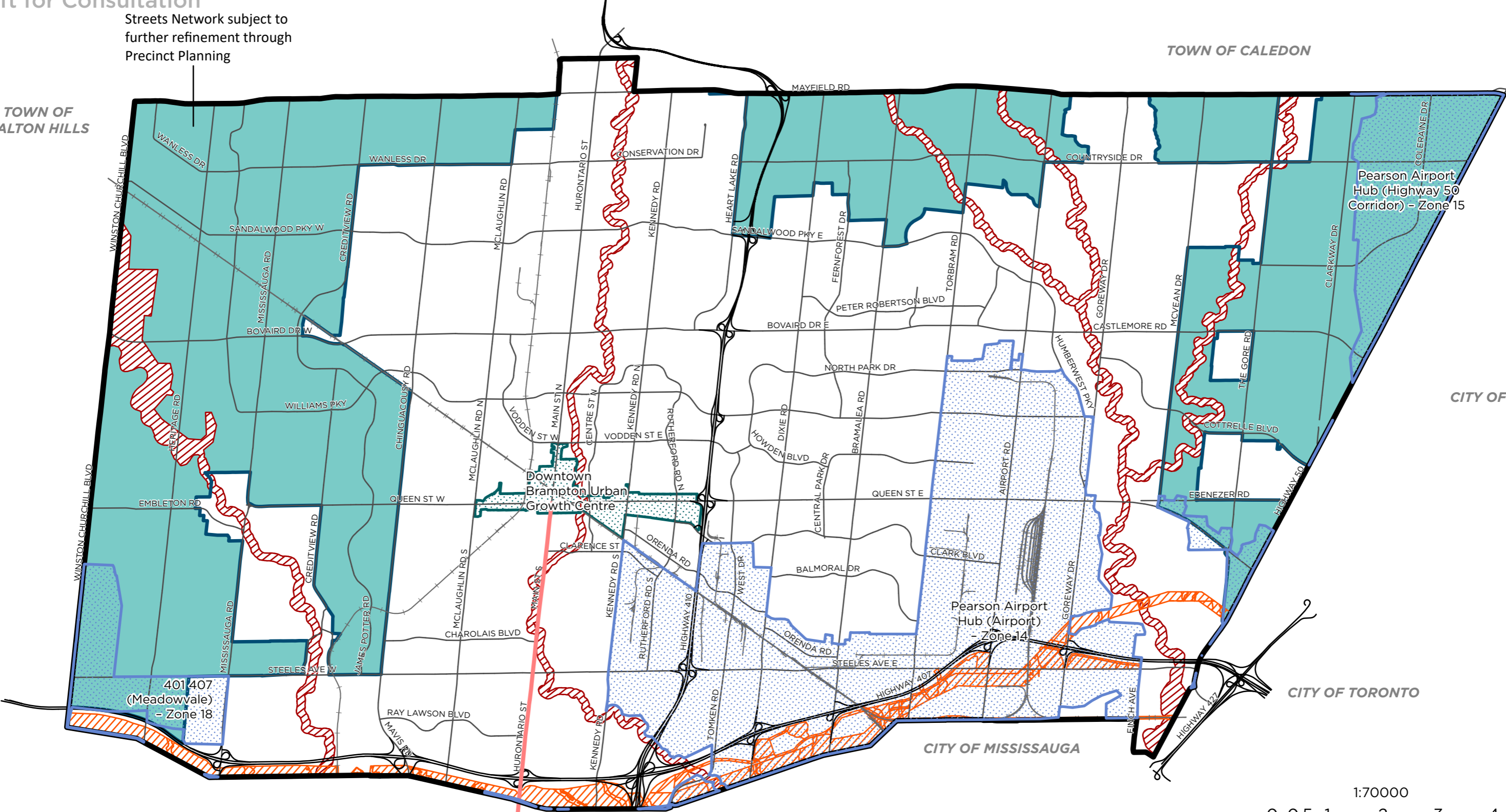
TOWN OF HALTON HILLS





TOWN OF CALEDON




CITY OF VAUGHAN


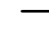

CITY OF TORONTO

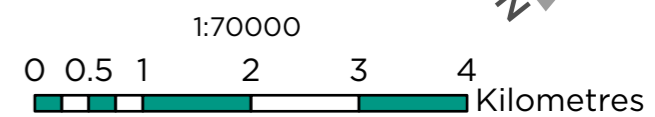
CITY OF MISSISSAUGA



-  Urban Growth Centre
-  Built-Up Area
-  Designated Greenfield Area
-  Provincially Significant Employment Zones (PSEZ)

-  Parkway Belt West Plan
-  Greenbelt Plan
-  Regional Intensification Corridor

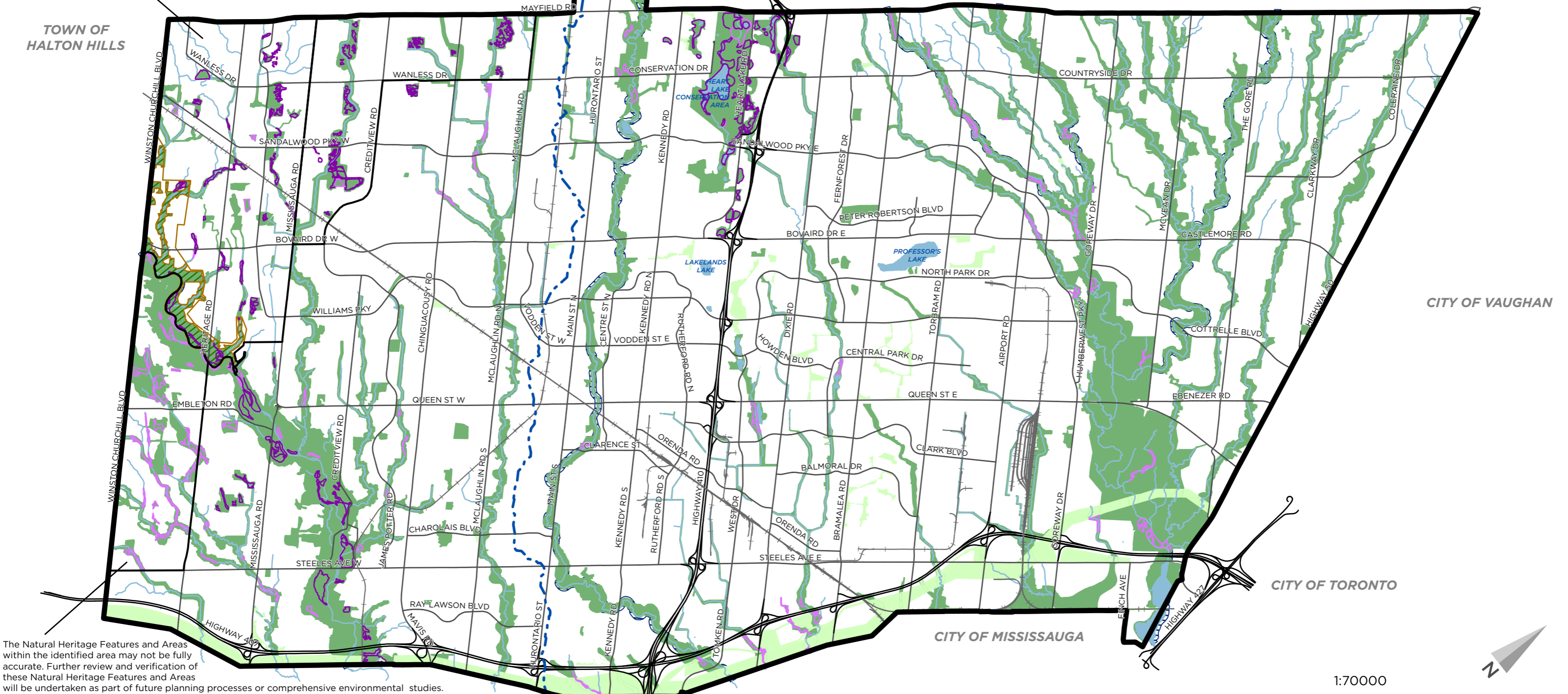
- Base Map Features**
-  Railway
  -  Highway
  -  Major Streets



Date: December 2022  
 Planning, Building and Economic Development  
 Brampton Plan

This map forms part of the Official Plan of the City of Brampton and must be read in conjunction with the text, other schedules and secondary plans. The boundaries and alignments of designations and overlays on this schedule are approximate and are not intended to be scaled.

The natural heritage system contained within Area 52 Heritage Heights is subject to a completed Subwatershed Study and the policies of the Secondary Plan, and to further refinements through Precinct Planning.



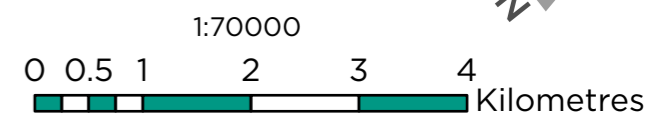
The Natural Heritage Features and Areas within the identified area may not be fully accurate. Further review and verification of these Natural Heritage Features and Areas will be undertaken as part of future planning processes or comprehensive environmental studies.

- Natural Heritage System
- Linkages and Enhancement Areas
- Urban River Valley
- Conservation Authority Boundaries

- Provincially Significant Wetland
- Unevaluated/Other Wetland

- Greenbelt Plan (Protected Countryside Area)
- Greenbelt Plan (Natural Heritage System Overlay)
- Water Resources System

- Base Map Features**
- Railway
  - Highway
  - Major Streets



Date: December 2022  
 Planning, Building and Economic Development  
 Brampton Plan

This map forms part of the Official Plan of the City of Brampton and must be read in conjunction with the text, other schedules and secondary plans. The boundaries and alignments of designations and overlays on this schedule are approximate and are not intended to be scaled.



The natural heritage system contained within Area 52 Heritage Heights is subject to a completed Subwatershed Study and the policies of the Secondary Plan, and to further refinements through Precinct Planning.

TOWN OF HALTON HILLS

TOWN OF CALEDON

CITY OF VAUGHAN

CITY OF TORONTO

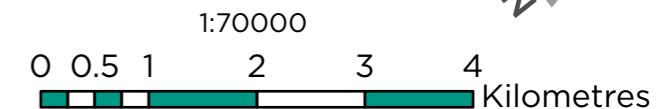
CITY OF MISSISSAUGA

The Natural Heritage Features and Areas within the identified area may not be fully accurate. Further review and verification of these Natural Heritage Features and Areas will be undertaken as part of future planning processes or comprehensive environmental studies.

- |                                     |  |  |                        |
|-------------------------------------|--|--|------------------------|
| Valleyland and Watercourse Corridor | Unevaluated/Other Wetland                                | Environmentally Sensitive/Significant Area       | Heritage Heights       |
| Woodland                            | Areas of Natural and Scientific Interest - Earth Science | Greenbelt Plan (Protected Countryside Area)      | Water Resources System |
| Provincially Significant Wetland    | Areas of Natural and Scientific Interest - Life Science  | Greenbelt Plan (Natural Heritage System Overlay) |                        |

**Base Map Features**

- Railway
- Highway
- Major Streets

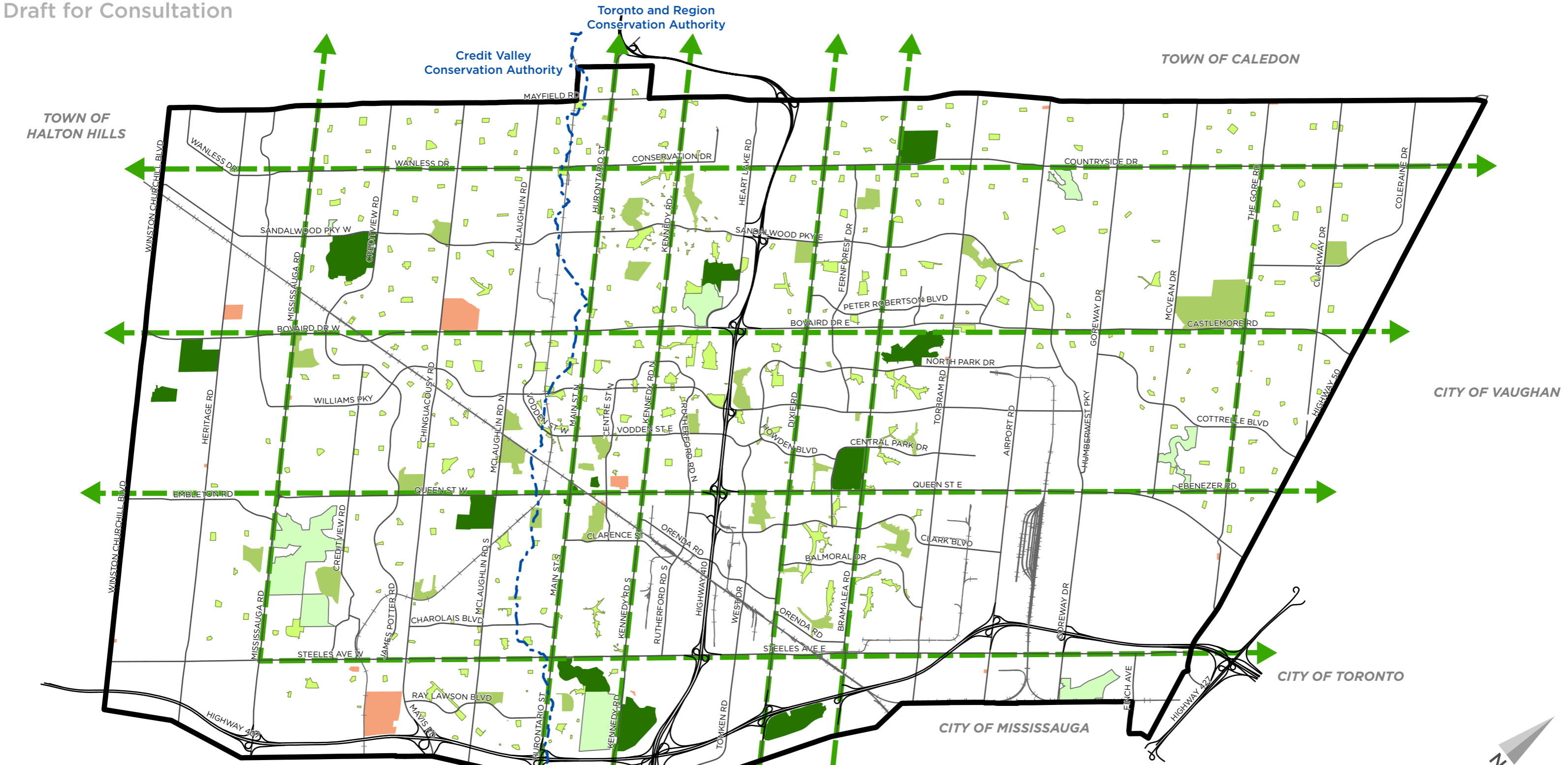


Date: December 2022  
 Planning, Building and Economic Development  
 Brampton Plan

This map forms part of the Official Plan of the City of Brampton and must be read in conjunction with the text, other schedules and secondary plans. The boundaries and alignments of designations and overlays on this schedule are approximate and are not intended to be scaled.

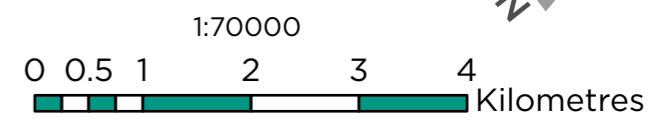
# SCHEDULE 6B | NATURAL HERITAGE FEATURES





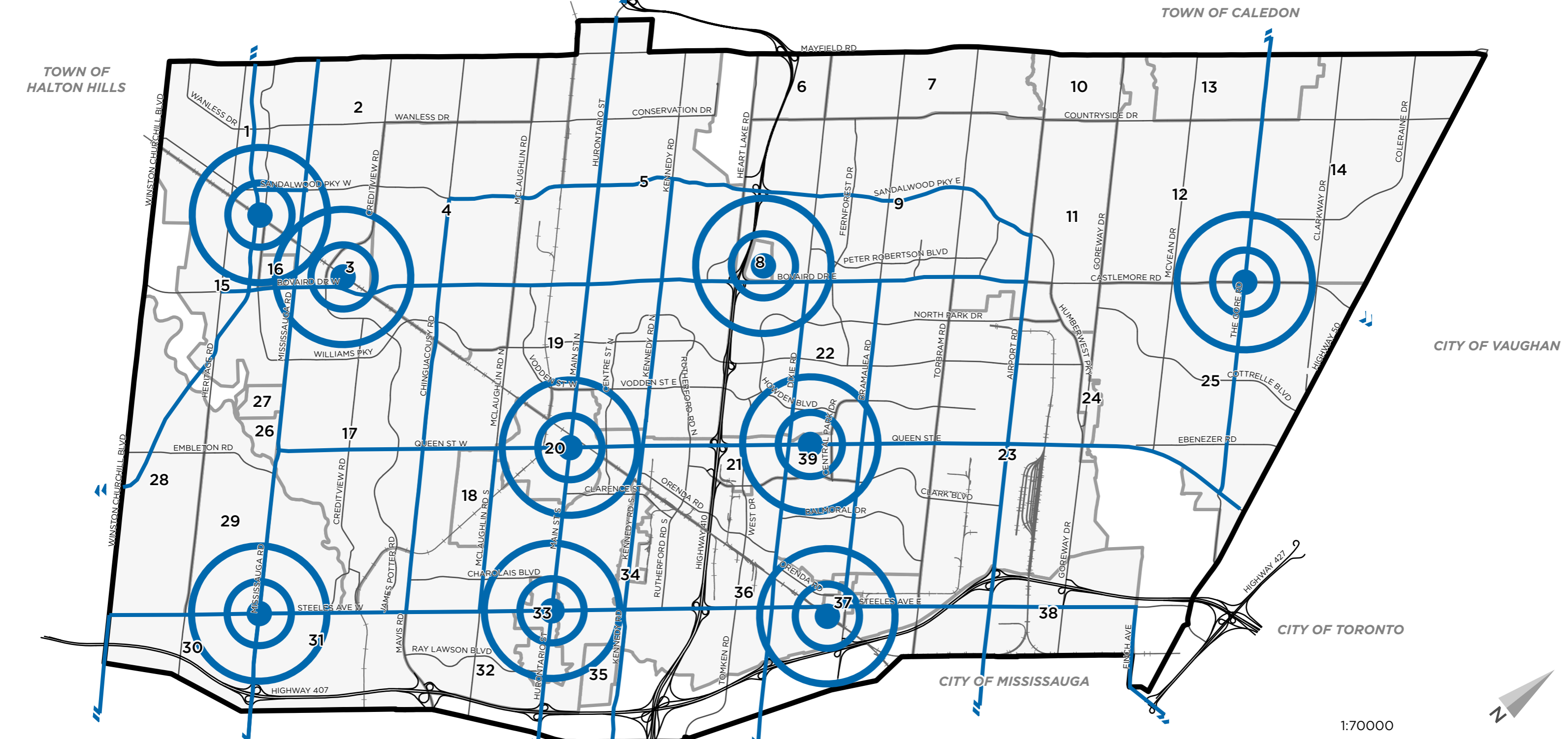
- City Park
- Private Commercial Recreation
- Community Park
- Greenway Boulevards
- Neighbourhood Park
- Conservation Authority Boundaries
- Cemetery

- Base Map Features**
- Railway
  - Highway
  - Major Streets



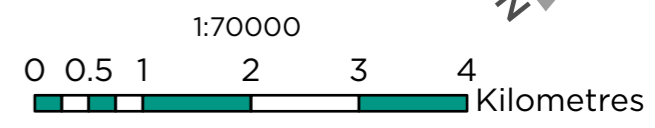
Date: December 2022  
 Planning, Building and Economic Development  
 Brampton Plan

This map forms part of the Official Plan of the City of Brampton and must be read in conjunction with the text, other schedules and secondary plans. The boundaries and alignments of designations and overlays on this schedule are approximate and are not intended to be scaled.



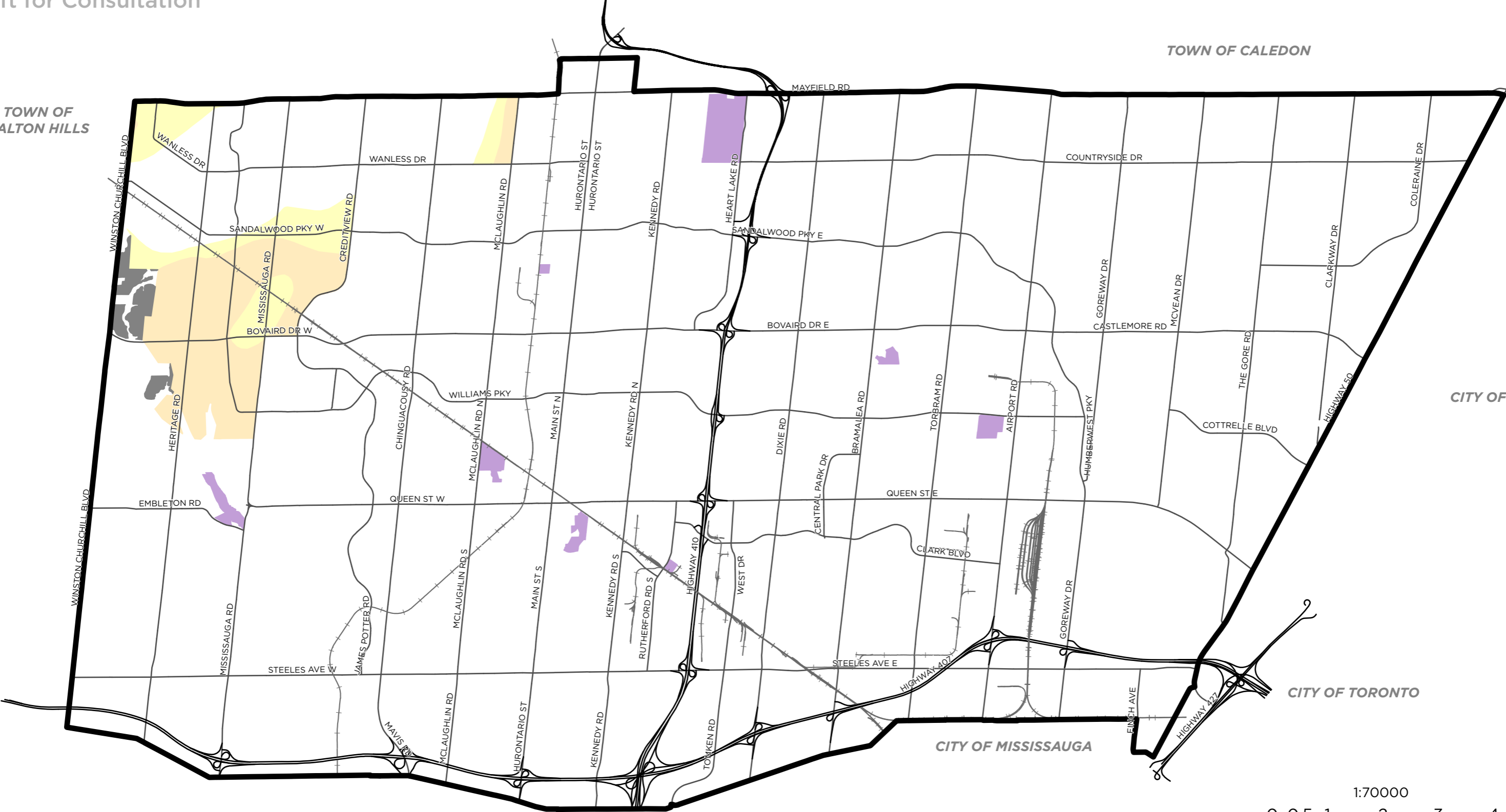
- Energy Planning Districts
- District Energy Areas
- District Energy Areas

- Base Map Features**
- Railway
  - Highway
  - Major Streets



Date: December 2022  
 Planning, Building and Economic Development  
 Brampton Plan

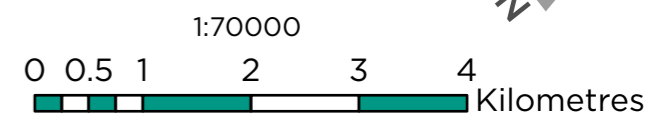
This map forms part of the Official Plan of the City of Brampton and must be read in conjunction with the text, other schedules and secondary plans. The boundaries and alignments of designations and overlays on this schedule are approximate and are not intended to be scaled.



- Waste Management Sites
- High Potential Mineral Aggregate Resource Area (HPMARA)

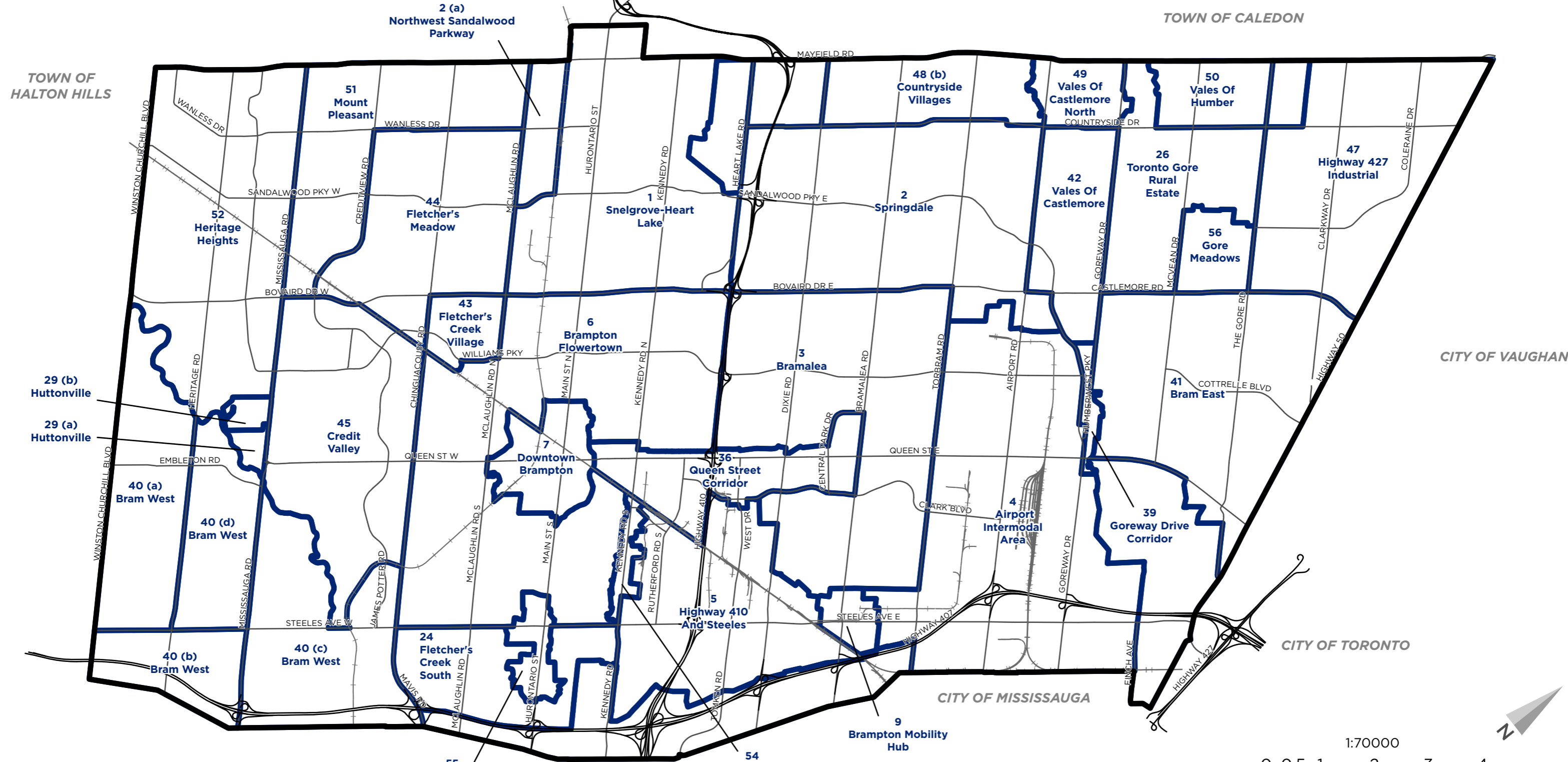
- Bedrock Aggregate Resource Deposits**  
**Overburden Thickness within Designated Greenfield Area**
- Less than 1 m
  - 1 m to 8 m
  - 8 m to 15 m

- Base Map Features**
- Railway
  - Highway
  - Arterial Roads



Date: December 2022  
 Planning, Building and Economic Development  
 Brampton Plan

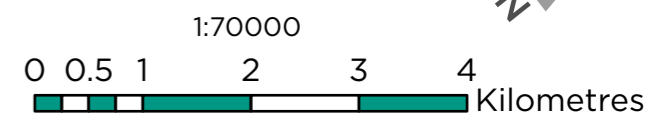
This map forms part of the Official Plan of the City of Brampton and must be read in conjunction with the text, other schedules and secondary plans. The boundaries and alignments of designations and overlays on this schedule are approximate and are not intended to be scaled.



Secondary Plan

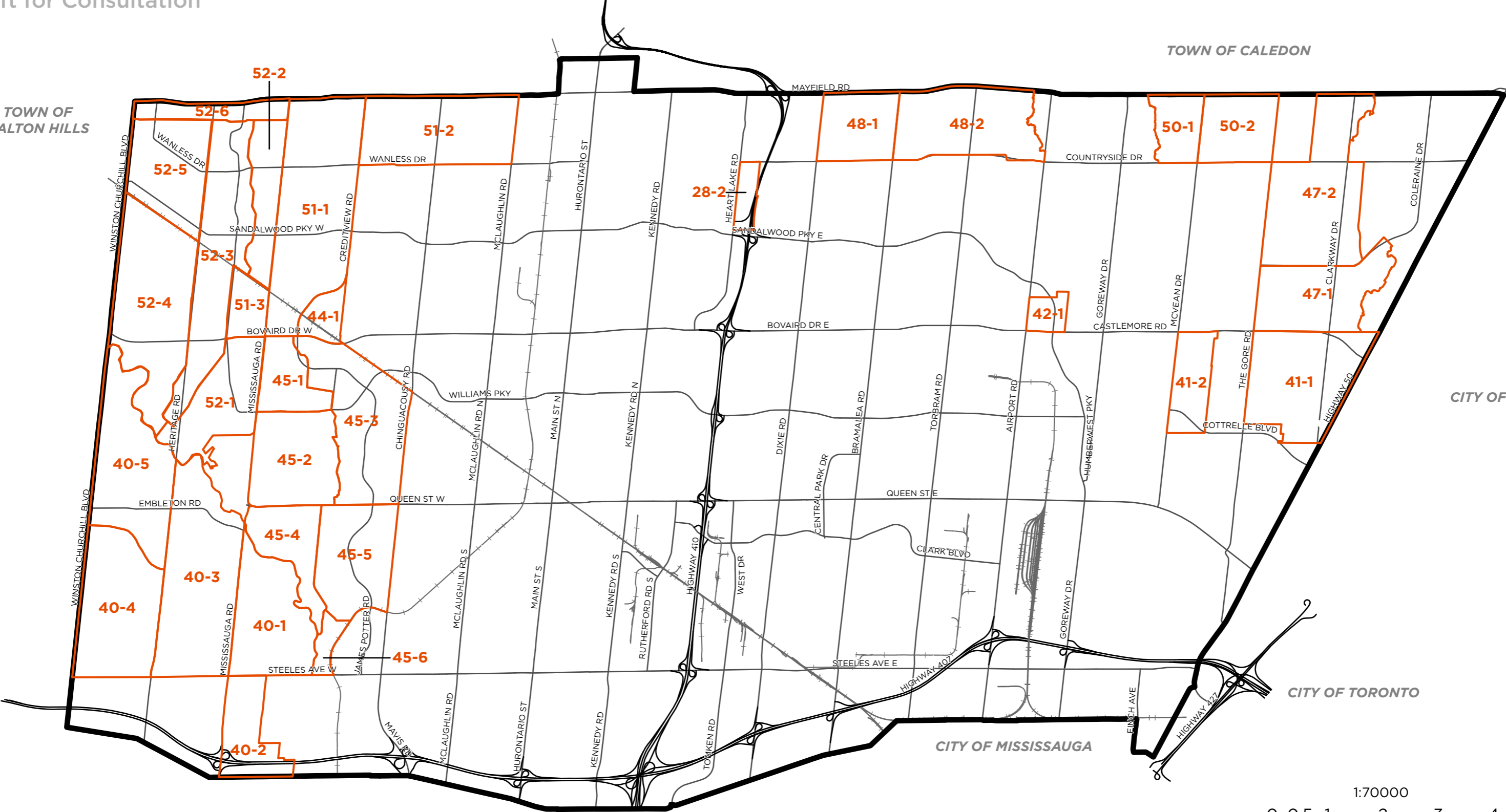
Base Map Features

- Railway
- Highway
- Arterial Roads



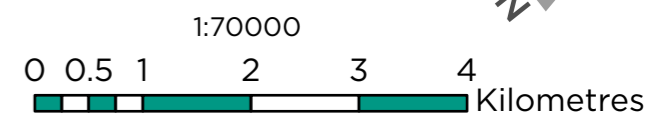
Date: December 2022  
 Planning, Building and Economic Development  
 Brampton Plan

This map forms part of the Official Plan of the City of Brampton and must be read in conjunction with the text, other schedules and secondary plans. The boundaries and alignments of designations and overlays on this schedule are approximate and are not intended to be scaled.



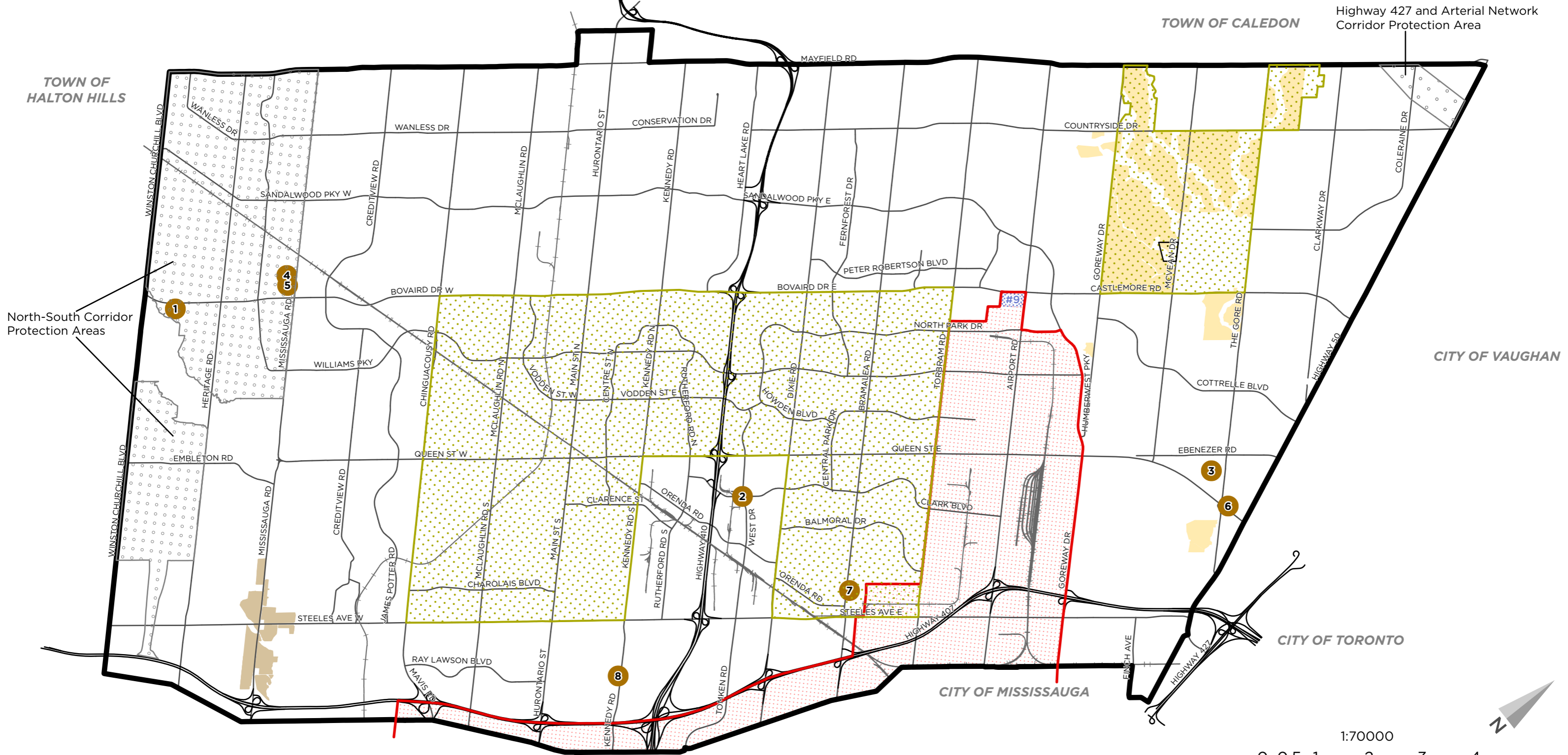
Precinct Plan Area

- Base Map Features**
- Railway
  - Highway
  - Arterial Roads



Date: December 2022  
 Planning, Building and Economic Development  
 Brampton Plan

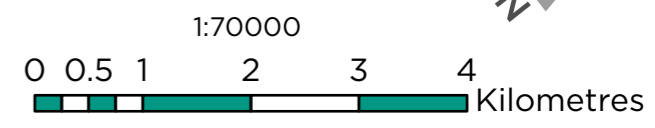
This map forms part of the Official Plan of the City of Brampton and must be read in conjunction with the text, other schedules and secondary plans. The boundaries and alignments of designations and overlays on this schedule are approximate and are not intended to be scaled.



- Lester B. Pearson International Airport (LBPIA) Operating Area
- Mature Neighbourhoods
- Established Rural Estate Residential Area
- Special Land Use Policy Areas (Subject to Further Refinement)

- Corridor Protection Area
- Special Study Area
- Mississauga Road Corridor

- Base Map Features**
- Railway
  - Highway
  - Major Streets



Date: December 2022  
 Planning, Building and Economic Development  
 Brampton Plan

This map forms part of the Official Plan of the City of Brampton and must be read in conjunction with the text, other schedules and secondary plans. The boundaries and alignments of designations and overlays on this schedule are approximate and are not intended to be scaled.