



MAIN STREET SOUTH

Heritage Conservation District
Property Information Sheets

DECEMBER 2017

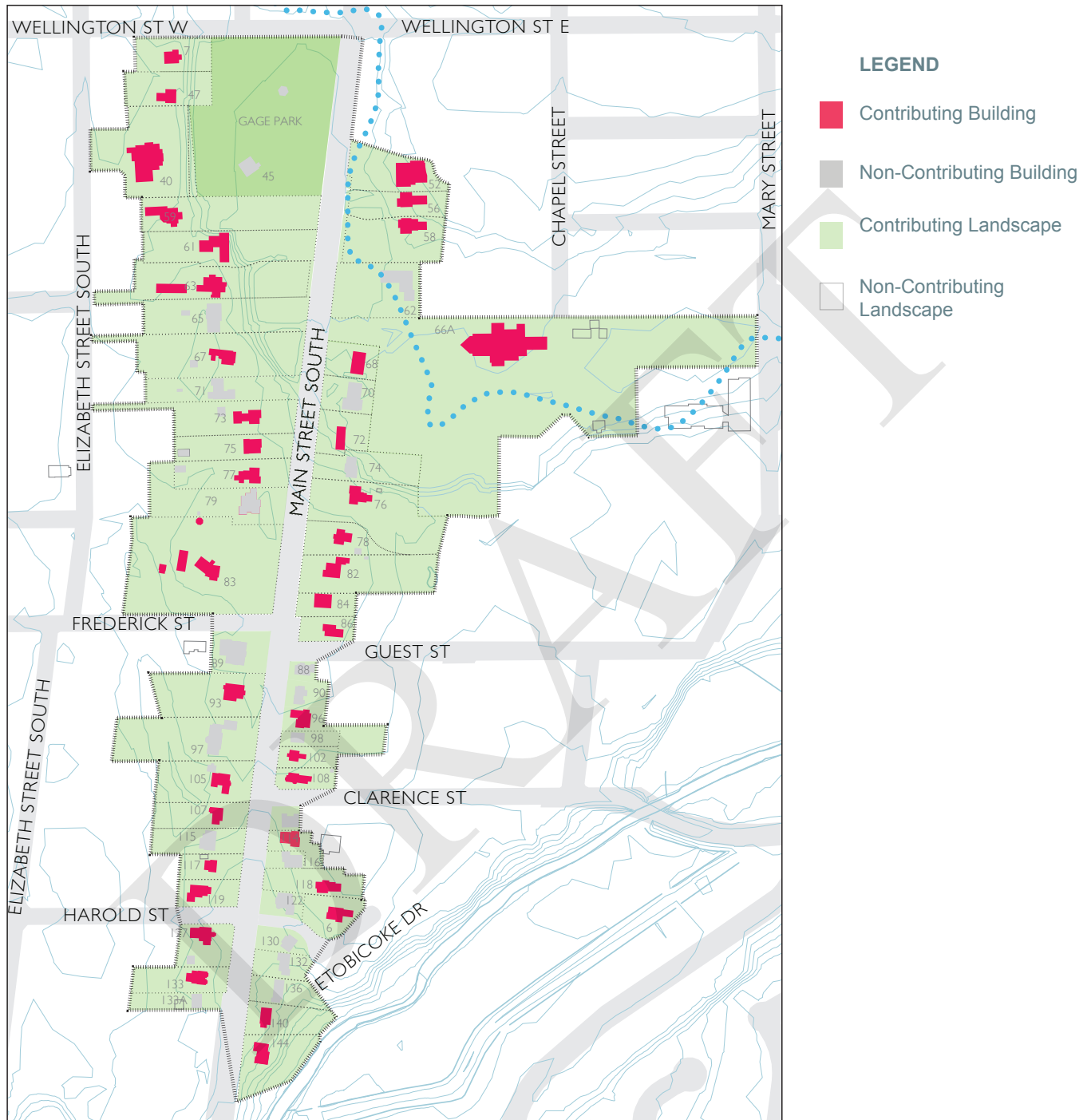
ERA

REFERENCE LIST OF PROPERTIES

West Side	Contributing Building	Architecture	Association	Contributing Landscape	Siting	Mature Tree(s)	Greenery	Topography	Creek Infrastructure
7 Wellington St.	✓			✓					
Gage Park (45 MSS)	X			✓					
47 Main St S	✓			✓					
40 Elizabeth St	✓			✓					
59 Main St S	✓			✓					
61 Main St S	✓			✓					
63 Main St S	✓			✓					
65 Main St S	X			✓					
67 Main St S	✓			✓					
71 Main St S	X			✓					
73 Main St S	✓			✓					
75 Main St S	✓			✓					
77 Main St S	✓			✓					
79 Main St S	X			✓					
83 Main St S	✓			✓					
89 Main St S	X			✓					
93 Main St S	✓			✓					
97 Main St S	X			✓					
105 Main St S	✓			✓					
107 Main St S	✓			✓					
115 Main St S	X			✓					
117 Main St S	✓			✓					
119 Main St S	✓			✓					
127 Main St S	✓			✓					
133 Main St S	✓			✓					
133A Main St S	X			✓					

East Side	Contributing Building	Architecture	Association	Contributing Landscape	Siting	Mature Tree(s)	Softscaping	Topography	Creek Infrastructure
52 Main St S	✓			✓					
56 Main St S	✓			✓					
58 Main St S	✓			✓					
62 Main St S	X			✓					
66A Main St S	✓			✓					
68 Main St S	✓			✓					
70 Main St S	X			✓					
72 Main St S	✓			✓					
74 Main St S	X			✓					
76 Main St S	✓			✓					
78 Main St S	✓			✓					
82 Main St S	✓			✓					
84 Main St S	✓			✓					
86 Main St S	✓			✓					
88 Main St S	X			✓					
90 Main St S	X			✓					
96 Main St S	✓			✓					
98 Main St S	X			✓					
102 Main St S	✓			✓					
108 Main St S	✓			✓					
13 Clarence St	X			✓					
114 Main St S	✓			✓					
116 Main St S	X			✓					
118 Main St S	✓			✓					
6 Etobicoke Dr	✓			✓					
122 Main St S	X			✓					
130 Main St S	X			✓					
132 Main St S	X			✓					
136 Main St S	X			✓					
140 Main St S	✓			✓					
144 Main St S	✓			✓					

REFERENCE MAP OF PROPERTIES



Map of Contributing Properties.
(Source: ERA)

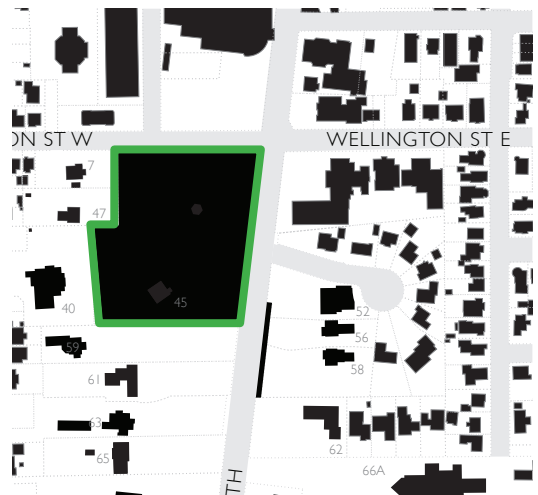
WEST SIDE OF MAIN STREET SOUTH

THIS INFO SHEETS IN THIS SECTION PRESENT A HIGH-LEVEL OVERVIEW OF THE EACH PROPERTY IN THE DISTRICT. THEY DO NOT CONSTITUTE A COMPREHENSIVE OUTLINE OF THE HISTORICAL BACKGROUND AND FEATURES OF EACH ADDRESS.

45 MAIN STREET SOUTH (GAGE PARK)



DESIGNATION STATUS		
Part IV		
Part V	Yes (Main Street South HCD)	
CONTRIBUTING BUILDING		X
ARCHITECTURE		X
Date Established	1903	
Style	(City Park)	
Estimated Alterations	n/a	
ASSOCIATION		X
Historic Owners/ Occupants, Other Associations	(see Siting)	
CONTRIBUTING LANDSCAPE		✓
SITING		✓
Initial Settlement/ Subdivision Plan	Settlement around Etobicoke Creek.	
Current Siting	Estate gardens originally owned by Kenneth Chisholm family, positioned in front of estate house Alderlea (40 Elizabeth St.). Estate gardens donated as parkland by Sir William J. Gage.	
GREEN PROCESSION LANDSCAPING		
Mature Tree(s)	Mature trees are plentiful throughout the park.	✓
Greenery	Grassy lawns, terracing and formal planted beds are visible throughout the park from the street.	✓
EVIDENCE OF ETOBICOKE CREEK		
Topography	Site topography reflects the historic plateau above the creek bed.	✓
Infrastructure	n/a	X



40 ELIZABETH STREET (ALDERLEA)



DESIGNATION STATUS	
Part IV	Yes (By-law #281-2001)
Part V	Yes (Main Street South HCD)
CONTRIBUTING BUILDING	
✓	
ARCHITECTURE	
✓	
Build Date	1867
Style	Italianate
Estimated Alterations	Modern addition at rear (west façade).
ASSOCIATION	
✓	
Historic Owners/ Occupants, Other Associations	Kenneth Chisholm, businessman, MPP. Thomas B. Coombs, Salvation Army/Royal Canadian Legion Commissioner. Architect believed to be William Kaufman.
CONTRIBUTING LANDSCAPE	
✓	
SITING	
✓	
Initial Settlement/ Subdivision Plan	Settlement around Etobicoke Creek
Current Siting	Deep setback from street on an elevation behind Gage Park.
GREEN PROCESSION LANDSCAPING	
Mature Tree(s)	n/a
X	
Greenery	Building surrounded by concrete parking lot.
X	
EVIDENCE OF ETOBICOKE CREEK	
Topography	Site topography reflects the historic plateau above the creek bed.
✓	
Infrastructure	n/a
X	



59 MAIN STREET SOUTH



DESIGNATION STATUS		
Part IV		
Part V	Yes (Main Street South HCD)	
CONTRIBUTING BUILDING		
ARCHITECTURE	✓	
Build Date	1876	
Style	Revival (Tudor)	
Estimated Alterations	Altered in 1904.	
ASSOCIATION		
Historic Owners/ Occupants, Other Associations	n/a	
	X	
CONTRIBUTING LANDSCAPE		
SITING	✓	
Initial Settlement/ Subdivision Plan	Settlement around Etobicoke Creek	
Current Siting	Deep setback from street.	
GREEN PROCESSION LANDSCAPING		
Mature Tree(s)	Several mature trees halfway up lawn and beyond which obscure views of the residence.	✓
Greenery	Large open grassy lawn with long straight driveway.	✓
EVIDENCE OF ETOBICOKE CREEK		
Topography	Site topography reflects the historic plateau above the creek bed.	✓
Infrastructure	n/a	X



61 MAIN STREET SOUTH



DESIGNATION STATUS	
Part IV	
Part V	Yes (Main Street South HCD)
CONTRIBUTING BUILDING	
ARCHITECTURE	✓
Build Date	1950
Style	Ranch
Estimated Alterations	
ASSOCIATION	
Historic Owners/ Occupants, Other Associations	n/a
CONTRIBUTING LANDSCAPE	
SITING	✓
Initial Settlement/ Subdivision Plan	Settlement around Etobicoke Creek
Current Siting	Deep setback from street. Building integrated into the landscape, responding to change in topography (as per mid-century styles).
GREEN PROCESSION LANDSCAPING	
Mature Tree(s)	Several mature trees at property line and throughout lawn which obscure views of the residence. ✓
Greenery	Large open grassy lawn with long driveway (shared with #63). ✓
EVIDENCE OF ETOBICOKE CREEK	
Topography	Site topography reflects the historic plateau above the creek bed. ✓
Infrastructure	n/a X



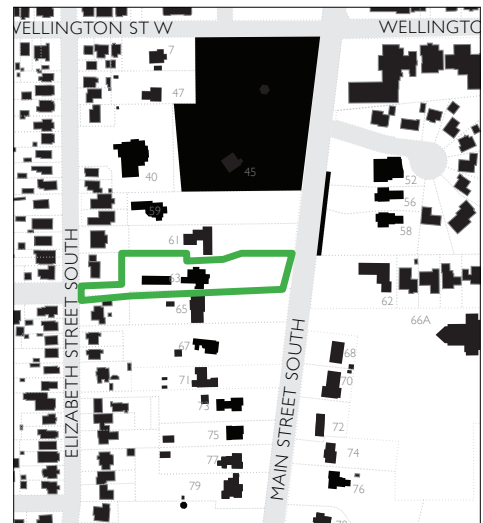
63 MAIN STREET SOUTH



DESIGNATION STATUS		
Part IV		
Part V	Yes (Main Street South HCD)	
CONTRIBUTING BUILDING		✓
ARCHITECTURE		✓
Build Date	1901-1926	
Style	Revival (Jacobethan)	
Estimated Alterations		
ASSOCIATION		X
Historic Owners/ Occupants, Other Associations	n/a	
CONTRIBUTING LANDSCAPE		✓
SITING		✓
Initial Settlement/ Subdivision Plan	Settlement around Etobicoke Creek	
Current Siting	Deep setback from street.	
GREEN PROCESSION LANDSCAPING		
Mature Tree(s)	Property characterized by mature trees obstructing views of residence.	✓
Greenery	Large grassy lawn with one long driveway (shared with #61) and another (curving southward in front of #65, 67, 71).	✓
EVIDENCE OF ETOBICOKE CREEK		
Topography	Site topography reflects the historic plateau above the creek bed.	✓
Infrastructure	n/a	X



Source: PAMA



65 MAIN STREET SOUTH



DESIGNATION STATUS	
Part IV	
Part V	Yes (Main Street South HCD)
CONTRIBUTING BUILDING	
	X
ARCHITECTURE	
	X
Build Date	1950-1980
Style	Ranch
Estimated Alterations	
ASSOCIATION	
	X
Historic Owners/ Occupants, Other Associations	n/a
CONTRIBUTING LANDSCAPE	
	✓
SITING	
	✓
Initial Settlement/ Subdivision Plan	Settlement around Etobicoke Creek
Current Siting	Deep setback from street.
GREEN PROCESSION LANDSCAPING	
Mature Tree(s)	Lawn characterized by mature tree canopy.
	✓
Greenery	Large grassy lawn and shrubbery, with a long driveway. Access to 63 Main St. S. driveway as well.
	✓
EVIDENCE OF ETOBICOKE CREEK	
Topography	Site topography reflects the historic plateau above the creek bed.
	✓
Infrastructure	n/a
	X



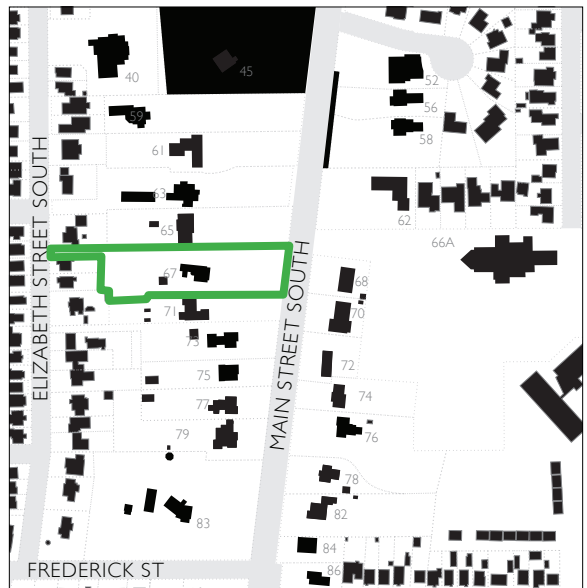
67 MAIN STREET SOUTH



DSC_0011 DESIGNATION STATUS		
Part IV	Yes (By-law #176-1986)	
Part V	Yes (Main Street South HCD)	
CONTRIBUTING BUILDING		✓
ARCHITECTURE		✓
Build Date	1871	
Style	Gothic Revival	
Estimated Alterations		
ASSOCIATION		✓
Historic Owners/ Occupants, Other Associations	George Green, first Crown Attorney for Peel County (1867-1879). John Smith, MPP (1892-1908). James R. Fallis, MPP (1913-1914). Consistent in massing and style with 73 Main Street South.	
CONTRIBUTING LANDSCAPE		✓
SITING		✓
Initial Settlement/ Subdivision Plan	Settlement around Etobicoke Creek	
Current Siting	Deep setback from street.	
GREEN PROCESSION LANDSCAPING		
Mature Tree(s)	Mature tree canopy obscuring views of residence.	✓
Greenery	Large grassy lawn below tree canopy. Meandering driveway shared with adjacent properties.	✓
EVIDENCE OF ETOBICOKE CREEK		
Topography	Site topography reflects the historic plateau above the creek bed.	✓
Infrastructure	n/a	X



Source: Dr. Bruce Cameron



71 MAIN STREET SOUTH



DESIGNATION STATUS		
Part IV		
Part V	Yes (Main Street South HCD)	
CONTRIBUTING BUILDING		X
ARCHITECTURE		X
Build Date		
Style	New Traditional	
Estimated Alterations		
ASSOCIATION		X
Historic Owners/ Occupants, Other Associations	n/a	
CONTRIBUTING LANDSCAPE		✓
SITING		✓
Initial Settlement/ Subdivision Plan	Settlement around Etobicoke Creek	
Current Siting	Deep setback from street.	
GREEN PROCESSION LANDSCAPING		
Mature Tree(s)	Several mature trees present on lawn.	✓
Greenery	Large hardscaped parking pad, obstructed by large grassy lawn peppered with formal plantings. Access to 63 Main St. S. driveway.	✓
EVIDENCE OF ETOBICOKE CREEK		
Topography	Site topography reflects the historic plateau above the creek bed.	✓
Infrastructure	n/a	X



73 MAIN STREET SOUTH



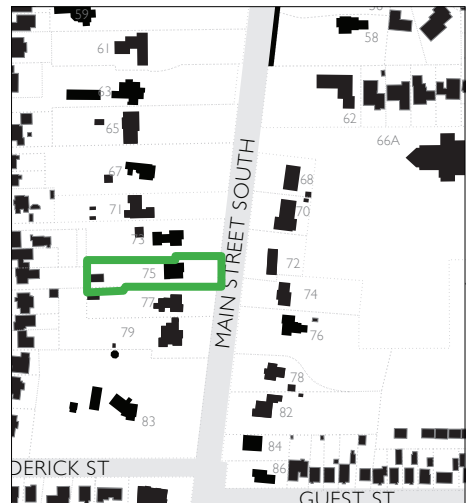
DESIGNATION STATUS	
Part IV	Yes (By-law #05-2016)
Part V	Yes (Main Street South HCD)
CONTRIBUTING BUILDING ✓	
ARCHITECTURE ✓	
Build Date	1860
Style	Gothic Revival
Estimated Alterations	
ASSOCIATION ✓	
Historic Owners/ Occupants, Other Associations	Heggie family, known for medical practice. Consistent in massing and style with 67 Main St. S.
CONTRIBUTING LANDSCAPE ✓	
SITING ✓	
Initial Settlement/ Subdivision Plan	Settlement around Etobicoke Creek
Current Siting	Large setback from street.
GREEN PROCESSION LANDSCAPING	
Mature Tree(s)	Mature trees present on lawn. ✓
Greenery	Large open grassy lawn enclosed by modern retaining wall. Long driveway lined with shrubs. ✓
EVIDENCE OF ETOBICOKE CREEK	
Topography	n/a X
Infrastructure	n/a X



75 MAIN STREET SOUTH



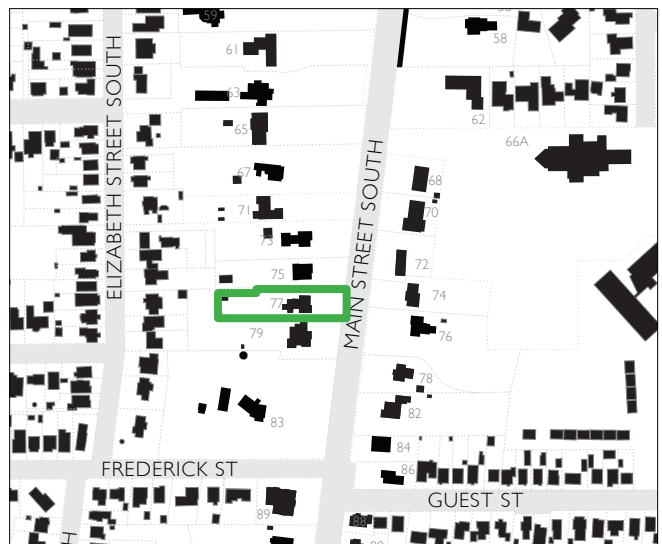
DESIGNATION STATUS		
Part IV		
Part V	Yes (Main Street South HCD)	
CONTRIBUTING BUILDING		✓
ARCHITECTURE		✓
Build Date	1900	
Style	Vernacular Victorian	
Estimated Alterations		
ASSOCIATION		X
Historic Owners/Occupants, Other Associations	Consistent in massing with the properties at 67 and 73 Main St. S.	
CONTRIBUTING LANDSCAPE		✓
SITING		✓
Initial Settlement/ Subdivision Plan	Settlement around Etobicoke Creek	
Current Siting	Large setback from street.	
GREEN PROCESSION LANDSCAPING		
Mature Tree(s)	Mature trees present in island within hardscaped yard.	✓
Greenery	Some grassy lawn by property line, overshadowed by large paved driveway and parking pad.	✓
EVIDENCE OF ETOBICOKE CREEK		
Topography	n/a	X
Infrastructure	n/a	X



77 MAIN STREET SOUTH



DESIGNATION STATUS		
Part IV	Yes (By-law #70-2010)	
Part V	Yes (Main Street South HCD)	
CONTRIBUTING BUILDING		✓
ARCHITECTURE		✓
Build Date	1877	
Style	Italianate	
Estimated Alterations	Porch built between 2009-12 (possibly restoration of original).	
ASSOCIATION		✓
Historic Owners/ Occupants, Other Associations	James A. Austin, first County Clerk.	
	James Golding, former Brampton Councillor, then Mayor.	
CONTRIBUTING LANDSCAPE		✓
SITING		✓
Initial Settlement/ Subdivision Plan	Settlement around Etobicoke Creek	
Current Siting	Large setback from street.	
GREEN PROCESSION LANDSCAPING		
Mature Tree(s)	Mature trees at edges of largely paved front yard.	✓
Greenery	Some grassy lawn enclosed by dominant modern retaining wall at property line. Some manicured landscaping by residence. Dominant paved circular driveway.	✓
EVIDENCE OF ETOBICOKE CREEK		
Topography	n/a	X
Infrastructure	n/a	X



79 MAIN STREET SOUTH



DESIGNATION STATUS		
Part IV		
Part V	Yes (Main Street South HCD)	
CONTRIBUTING BUILDING		
	X	
ARCHITECTURE		
	X	
Build Date	1890	
Style	New Traditional (formerly Shingle style)	
Estimated Alterations	Modified extensively in 2012.	
ASSOCIATION		
	X	
Historic Owners/ Occupants, Other Associations	<p>Thomas Duggan, prominent local resident. He later moved to the adjacent property.</p> <p>The building has been modified to the point where it is no longer recognizable as an 1890s estate house belonging to a prominent resident.</p>	
CONTRIBUTING LANDSCAPE		
	✓	
SITING		
	✓	
Initial Settlement/ Subdivision Plan	Settlement around Etobicoke Creek	
Current Siting	Large setback from street.	
GREEN PROCESSION LANDSCAPING		
Mature Tree(s)	Several mature trees halfway up lawn and beyond obscure views of the residence.	✓
Greenery	Historic meandering driveway replaced with a large paved curvilinear driveway. Grassy lawn enclosed by driveway and large retaining wall at property line.	✓
EVIDENCE OF ETOBICOKE CREEK		
Topography	n/a	X
Infrastructure	n/a	X



83 MAIN STREET SOUTH



DESIGNATION STATUS		
Part IV		
Part V	Yes (Main Street South HCD)	
CONTRIBUTING BUILDING		
ARCHITECTURE	✓	
Build Date	1920	
Style	Arts & Crafts	
Estimated Alterations	Porte cochere/balcony may be a later addition.	
ASSOCIATION		
Historic Owners/ Occupants, Other Associations	Thomas Duggan, prominent local resident. Duggan formerly lived at the adjacent property at 79 Main St. S. Designed by Toronto architect Mackenzie Waters. Known as "Monaghan Villa".	
CONTRIBUTING LANDSCAPE		
SITING	✓	
Initial Settlement/ Subdivision Plan	Settlement around Etobicoke Creek	
Current Siting	Deep setback from street on a corner lot, larger than those adjacent. Front elevation does not face street (as per Arts & Crafts style).	
GREEN PROCESSION LANDSCAPING		
Mature Tree(s)	Residence fully screened by mature trees. ✓	
Greenery	Large grassy lawn, with long meandering driveway connecting to Main and Frederick Sts. ✓	
EVIDENCE OF ETOBICOKE CREEK		
Topography	n/a	X
Infrastructure	n/a	X



89 MAIN STREET SOUTH



DESIGNATION STATUS		
Part IV		
Part V	Yes (Main Street South HCD)	
CONTRIBUTING BUILDING		X
ARCHITECTURE		X
Build Date	c. 1980s	
Style	New Traditional	
Estimated Alterations		
ASSOCIATION		X
Historic Owners/ Occupants, Other Associations		
CONTRIBUTING LANDSCAPE		✓
SITING		✓
Initial Settlement/ Subdivision Plan	Settlement around Etobicoke Creek	
Current Siting	Corner lot, set back from street.	
GREEN PROCESSION LANDSCAPING		
Mature Tree(s)	Mature trees present within lawn, obscuring views of residence.	✓
Greenery	Grassy lawn and landscaped shrub- bery at corner of lot mitigates large paved driveway and parking pad south of corner.	✓
EVIDENCE OF ETOBICOKE CREEK		
Topography	n/a	X
Infrastructure	n/a	X



93 MAIN STREET SOUTH



DESIGNATION STATUS		
Part IV		
Part V	Yes (Main Street South HCD)	
CONTRIBUTING BUILDING		✓
ARCHITECTURE		✓
Build Date	1874	
Style	Italianate	
Estimated Alterations	Windows and doors, stucco cladding and porticos may not be original.	
ASSOCIATION		✓
Historic Owners/ Occupants, Other Associations	Lieutenant-Colonel Cecil M. Corkett, a WWI veteran, became Postmaster of Brampton in 1932, and lived here from the 1930s-60s.	
CONTRIBUTING LANDSCAPE		✓
SITING		✓
Initial Settlement/ Subdivision Plan	1873 Jones Plan.	
Current Siting	Set back from street.	
GREEN PROCESSION LANDSCAPING		
Mature Tree(s)	Mature trees present within lawn.	✓
Greenery	Circular driveway enclosing large grassy lawn. Beds of planted shrubbery along front façade.	✓
EVIDENCE OF ETOBICOKE CREEK		
Topography	n/a	X
Infrastructure	n/a	X



97 MAIN STREET SOUTH



DESIGNATION STATUS		
Part IV		
Part V	Yes (Main Street South HCD)	
CONTRIBUTING BUILDING		X
ARCHITECTURE		X
Build Date		
Style	New Traditional	
Estimated Alterations		
ASSOCIATION		X
Historic Owners/ Occupants, Other Associations		
CONTRIBUTING LANDSCAPE		✓
SITING		X
Initial Settlement/ Subdivision Plan	1873 Jones Plan.	
Current Siting	Large setback from street, inconsistent with those of adjacent properties in the 1873 Jones subdivision.	
GREEN PROCESSION LANDSCAPING		
Mature Tree(s)	Mature trees fully screen residence.	✓
Greenery	Curvilinear driveway leads to a dominant paved parking pad in front yard, surrounded by some grassy lawn.	X
EVIDENCE OF ETOBICOKE CREEK		
Topography	n/a	X
Infrastructure	n/a	X



105 MAIN STREET SOUTH



DESIGNATION STATUS	
Part IV	
Part V	Yes (Main Street South HCD)
CONTRIBUTING BUILDING	
	✓
ARCHITECTURE	
	✓
Build Date	
Style	Vernacular Victorian
Estimated Alterations	Full south side addition, likely in the 1980s. Building has been reclad.
ASSOCIATION	
	X
Historic Owners/ Occupants, Other Associations	
CONTRIBUTING LANDSCAPE	
	✓
SITING	
	✓
Initial Settlement/ Subdivision Plan	1873 Jones Plan.
Current Siting	Set back from street.
GREEN PROCESSION LANDSCAPING	
Mature Tree(s)	Mature and semi-mature trees partially obstruct views of the residence.
	✓
Greenery	Large open grassy lawn. Hardscaped driveway curves off original long driveway for parking within front yard.
	✓
EVIDENCE OF ETOBICOKE CREEK	
Topography	n/a
	X
Infrastructure	n/a
	X



Source: PAMA



107 MAIN STREET SOUTH



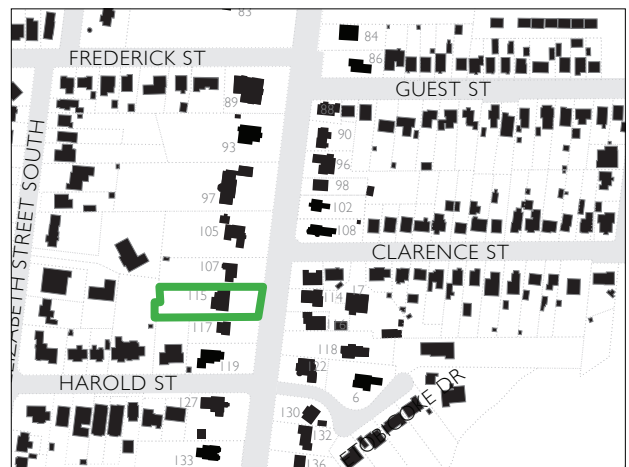
DESIGNATION STATUS		
Part IV		
Part V	Yes (Main Street South HCD)	
CONTRIBUTING BUILDING		✓
ARCHITECTURE		✓
Build Date	1950-1960	
Style	Wartime Housing	
Estimated Alterations		
ASSOCIATION		X
Historic Owners/ Occupants, Other Associations		
CONTRIBUTING LANDSCAPE		✓
SITING		✓
Initial Settlement/ Subdivision Plan	1873 Joness Plan.	
Current Siting	Set back from street.	
GREEN PROCESSION LANDSCAPING		
Mature Tree(s)	Mature tree present within the side yard.	✓
Greenery	Open grassy lawn peppered with some planted shrubbery. Paved driveway at edge of property with a meandering parking pad.	✓
EVIDENCE OF ETOBICOKE CREEK		
Topography	n/a	X
Infrastructure	n/a	X



115 MAIN STREET SOUTH



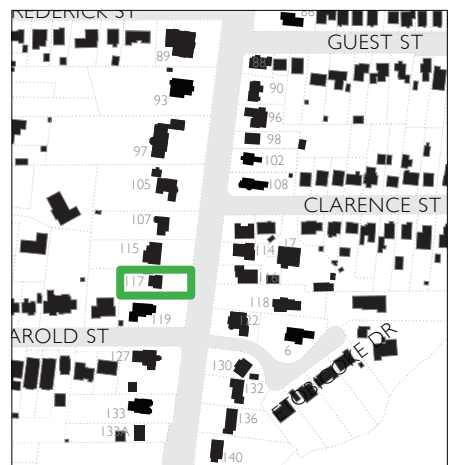
DESIGNATION STATUS	
Part IV	
Part V	Yes (Main Street South HCD)
CONTRIBUTING BUILDING	
	X
ARCHITECTURE	
	X
Build Date	1960-1980
Style	Ranch (Split Level)
Estimated Alterations	
ASSOCIATION	
	X
Historic Owners/ Occupants, Other Associations	
CONTRIBUTING LANDSCAPE	
	✓
SITING	
	✓
Initial Settlement/ Subdivision Plan	1873 Joness Plan.
Current Siting	Set back from street.
GREEN PROCESSION LANDSCAPING	
Mature Tree(s)	Mature trees partially obscure residence near the front property line.
	✓
Greenery	Small circular driveway, and longer driveway at edge of property, both dominated by a large grassy lawn with planted shrubbery.
	✓
EVIDENCE OF ETOBICOKE CREEK	
Topography	n/a
	X
Infrastructure	n/a
	X



117 MAIN STREET SOUTH



DESIGNATION STATUS		
Part IV		
Part V	Yes (Main Street South HCD)	
CONTRIBUTING BUILDING		✓
ARCHITECTURE		✓
Build Date	1941-1980	
Style	Revival (Dutch Colonial)	
Estimated Alterations	Portico added between 2012-14.	
ASSOCIATION		X
Historic Owners/ Occupants, Other Associations	n/a	
CONTRIBUTING LANDSCAPE		✓
SITING		✓
Initial Settlement/ Subdivision Plan	1873 Joness Plan.	
Current Siting	Set back from street.	
GREEN PROCESSION LANDSCAPING		
Mature Tree(s)	Mature trees present throughout lawn.	✓
Greenery	Open grassy lawn peppered with formal planting sections and trees. Partially curvilinear pathway leads to front of house, and connects to a small driveway at the property edge.	✓
EVIDENCE OF ETOBICOKE CREEK		
Topography	n/a	X
Infrastructure	n/a	X



119 MAIN STREET SOUTH



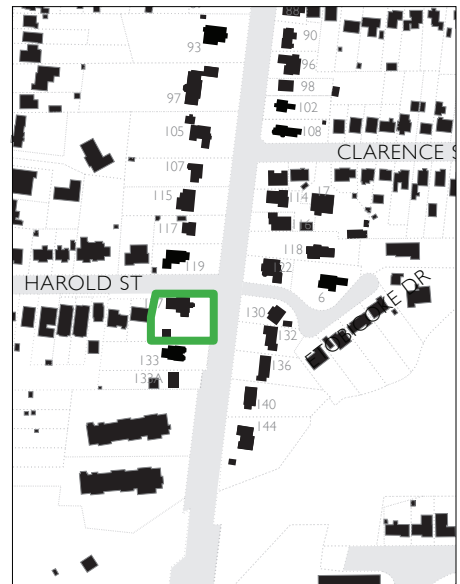
DESIGNATION STATUS		
Part IV		
Part V	Yes (Main Street South HCD)	
CONTRIBUTING BUILDING		✓
ARCHITECTURE		✓
Build Date	1900	
Style	Vernacular Victorian	
Estimated Alterations	Front porch enclosed likely in 1960-70s. Rear addition may have occurred concurrently.	
ASSOCIATION		X
Historic Owners/Occupants, Other Associations	n/a	
CONTRIBUTING LANDSCAPE		✓
SITING		✓
Initial Settlement/Subdivision Plan	1873 Joness Plan.	
Current Siting	Corner lot, set back from street.	
GREEN PROCESSION LANDSCAPING		
Mature Tree(s)	Mature trees line both street frontages, obstructing views of the residence.	✓
Greenery	Shrubbery planted along all property lines and in front of the residence. Large open grassy lawn peppered with trees and a small footpath to the front door.	✓
EVIDENCE OF ETOBICOKE CREEK		
Topography	n/a	X
Infrastructure	n/a	X



127 MAIN STREET SOUTH



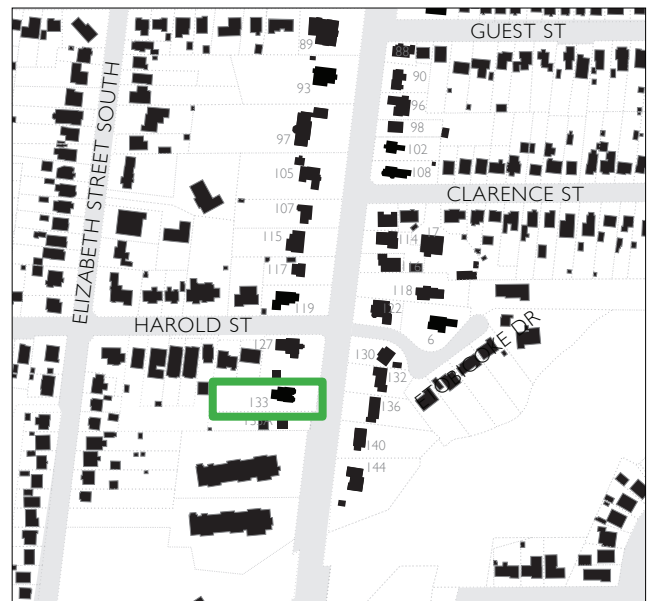
DESIGNATION STATUS		
Part IV		
Part V	Yes (Main Street South HCD)	
CONTRIBUTING BUILDING		✓
ARCHITECTURE		✓
Build Date	1920	
Style	Edwardian (Foursquare)	
Estimated Alterations	South-side sunporch is a later addition. May have been added concurrently with the rear attached garage.	
ASSOCIATION		X
Historic Owners/Occupants, Other Associations	n/a	
CONTRIBUTING LANDSCAPE		✓
SITING		✓
Initial Settlement/Subdivision Plan	1873 Jones Plan.	
Current Siting	Corner lot, set back from street.	
GREEN PROCESSION LANDSCAPING		
Mature Tree(s)	Mature trees present throughout the lawn and along the south property line.	✓
Greenery	Very large open grassy lawn peppered with landscaped beds and trees. Lawn partially bordered with a small retaining wall at the street edge.	✓
EVIDENCE OF ETOBICOKE CREEK		
Topography	n/a	X
Infrastructure	n/a	X



133 MAIN STREET SOUTH



DESIGNATION STATUS		
Part IV	Yes (By-law #33-2006)	
Part V	Yes (Main Street South HCD)	
CONTRIBUTING BUILDING		✓
ARCHITECTURE		✓
Build Date	1870-1880	
Style	Gothic Revival	
Estimated Alterations	Large front portico and upper balcony are alterations.	
ASSOCIATION		✓
Historic Owners/ Occupants, Other Associations	David Kirkwood and family. Known as the Kirkwood House.	
CONTRIBUTING LANDSCAPE		✓
SITING		✓
Initial Settlement/ Subdivision Plan	1873 Jones Plan.	
Current Siting	Set back from street.	
GREEN PROCESSION LANDSCAPING		
Mature Tree(s)	Mature trees present throughout lawn.	✓
Greenery	Large grassy lawn enclosed by prominent modern retaining wall. Landscaped beds planted throughout. Shrubs line pedestrian approach to front entrance. Driveway at property edge with a paved parking pad encroaching into front yard.	✓
EVIDENCE OF ETOBICOKE CREEK		
Topography	n/a	X
Infrastructure	n/a	X



133A MAIN STREET SOUTH



DESIGNATION STATUS		
Part IV		
Part V	Yes (Main Street South HCD)	
CONTRIBUTING BUILDING		X
ARCHITECTURE		X
Build Date	1950-1980	
Style	Ranch	
Estimated Alterations		
ASSOCIATION		X
Historic Owners/ Occupants, Other Associations	n/a	
CONTRIBUTING LANDSCAPE		✓
SITING		✓
Initial Settlement/ Subdivision Plan	1873 Joness Plan.	
Current Siting	Set back from street.	
GREEN PROCESSION LANDSCAPING		
Mature Tree(s)	Mature trees partially screen residence.	✓
Greenery	Set within an open, grassy lawn within a minor modern retaining wall. Long straight driveway at edge of property.	✓
EVIDENCE OF ETOBICOKE CREEK		
Topography	n/a	X
Infrastructure	n/a	X



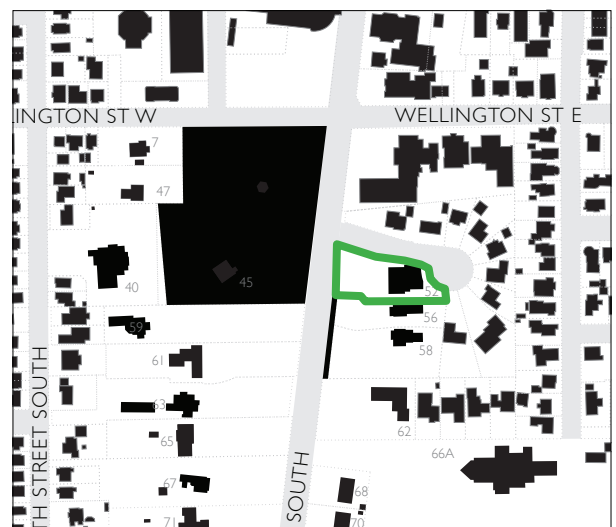
**EAST SIDE OF
MAIN STREET SOUTH**

THIS INFO SHEETS IN THIS SECTION PRESENT A HIGH-LEVEL OVERVIEW OF THE EACH PROPERTY IN THE DISTRICT. THEY DO NOT CONSTITUTE A COMPREHENSIVE OUTLINE OF THE HISTORICAL BACKGROUND AND FEATURES OF EACH ADDRESS.

52 MAIN STREET SOUTH



DESIGNATION STATUS		
Part IV		
Part V	Yes (Main Street South HCD)	
CONTRIBUTING BUILDING ✓		
ARCHITECTURE ✓		
Build Date	1850-1870	
Style	Italianate	
Estimated Alterations	Porch support alterations, alterations to exterior cladding, addition of a full-width balcony above verandah.	
ASSOCIATION ✓		
Historic Owners/ Occupants, Other Associations	Christopher Stork, businessman. The Bull family.	
CONTRIBUTING LANDSCAPE ✓		
SITING ✓		
Initial Settlement/ Subdivision Plan	Settlement around Etobicoke Creek	
Current Siting	Corner lot, deep setback from street.	
GREEN PROCESSION LANDSCAPING		
Mature Tree(s)	Some mature trees present close to the front of the building, far from street.	X
Greenery	Hedges, formal gardens and planted beds present closer to front of building, but setback is dominated by a large paved parking lot.	X
EVIDENCE OF ETOBICOKE CREEK		
Topography	n/a	X
Infrastructure	n/a	X



56 MAIN STREET SOUTH



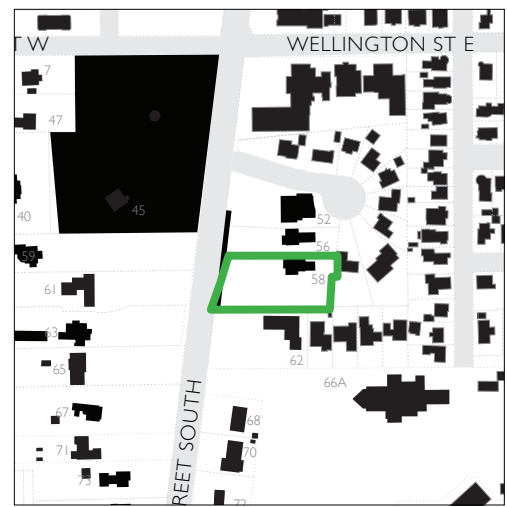
DESIGNATION STATUS	
Part IV	
Part V	Yes (Main Street South HCD)
CONTRIBUTING BUILDING ✓	
ARCHITECTURE ✓	
Build Date	1880
Style	Italianate
Estimated Alterations	
ASSOCIATION ✓	
Historic Owners/Occupants, Other Associations	The Stork family and the Hewetson family.
CONTRIBUTING LANDSCAPE ✓	
SITING ✓	
Initial Settlement/ Subdivision Plan	Settlement around Etobicoke Creek
Current Siting	Deep setback from street.
GREEN PROCESSION LANDSCAPING	
Mature Tree(s)	Mature trees present throughout lawn. ✓
Greenery	Very large open grassy lawn. Long meandering gravel driveway shared with 58 Main St. S. ✓
EVIDENCE OF ETOBICOKE CREEK	
Topography	Small incline reflects the historic river valley. ✓
Infrastructure	Posts of historic bridge over Etobicoke Creek connecting 56 and 58 Main St. S. to the street remain at the edges of their shared driveway. Creek retaining wall remains near property line. ✓



58 MAIN STREET SOUTH



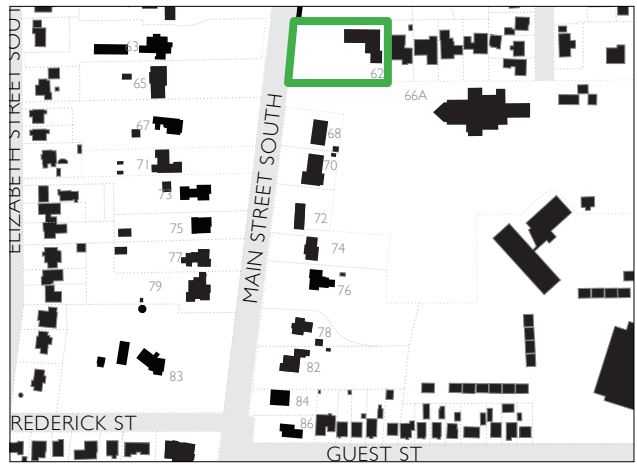
DESIGNATION STATUS		
Part IV		
Part V	Yes (Main Street South HCD)	
CONTRIBUTING BUILDING		✓
ARCHITECTURE		✓
Build Date	1881	
Style	Italianate	
Estimated Alterations	Porch supports appear to have been altered.	
ASSOCIATION		✓
Historic Owners/Occupants, Other Associations	The Stork family and the Robinson family, both prominent in business in Brampton over the 19 th and 20 th centuries.	
CONTRIBUTING LANDSCAPE		✓
SITING		✓
Initial Settlement/ Subdivision Plan	Settlement around Etobicoke Creek	
Current Siting		
GREEN PROCESSION LANDSCAPING		
Mature Tree(s)	Mature trees present on lawn, and lining the street edge, obscuring views of the residence.	✓
Greenery	Very large open grassy lawn. Long meandering gravel driveway shared with 56 Main St. S.	✓
EVIDENCE OF ETOBICOKE CREEK		
Topography	Small incline reflects the historic river valley.	✓
Infrastructure	Posts of historic bridge over Etobicoke Creek connecting 56 and 58 Main St. S. to the street remain at the edges of their shared driveway. Creek retaining wall remains near property line.	✓



62 MAIN STREET SOUTH



DESIGNATION STATUS		
Part IV		
Part V	Yes (Main Street South HCD)	
CONTRIBUTING BUILDING		X
ARCHITECTURE		X
Build Date	1950-1970	
Style	Ranch	
Estimated Alterations		
ASSOCIATION		X
Historic Owners/Occupants, Other Associations	n/a	
CONTRIBUTING LANDSCAPE		✓
SITING		X
Initial Settlement/ Subdivision Plan	Settlement around Etobicoke Creek	
Current Siting	Corner lot. Set back from Main Street South. Set back not in line with adjacent original residences around Etobicoke Creek.	
GREEN PROCESSION LANDSCAPING		
Mature Tree(s)	Mature and semi-mature trees present throughout lawn, partially obscuring views of residence.	✓
Greenery	Large open grassy lawn peppered with trees. Long meandering gravel driveway connecting to both Main St. S. and Woodbrook Dr.	✓
EVIDENCE OF ETOBICOKE CREEK		
Topography	n/a	X
Infrastructure	n/a	X



66A MAIN STREET SOUTH (ST. MARY'S CHURCH)



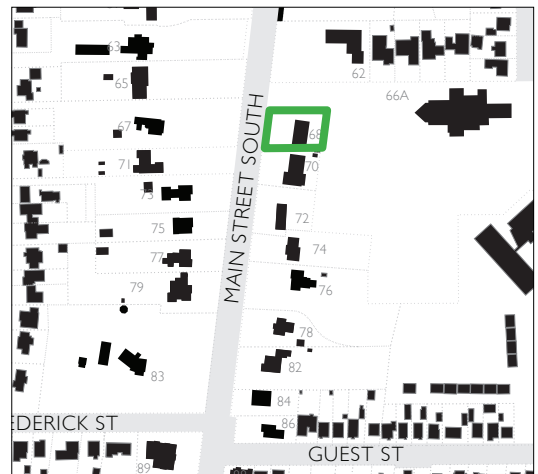
DESIGNATION STATUS		
Part IV		
Part V	Yes (Main Street South HCD)	
CONTRIBUTING BUILDING		
ARCHITECTURE		✓
Build Date	1960	
Style	Mid-Century Modern (Ecclesiastical)	
Estimated Alterations		
ASSOCIATION		
Historic Owners/Occupants, Other Associations	n/a	X
CONTRIBUTING LANDSCAPE		
SITING		✓
Initial Settlement/ Subdivision Plan	Settlement around Etobicoke Creek	
Current Siting	Set far back from street due to the former curve of the Etobicoke Creek through the lot.	
GREEN PROCESSION LANDSCAPING		
Mature Tree(s)	Mature willow tree obscures the building from the street.	✓
Greenery	Street frontage dominated by paved driveway.	X
EVIDENCE OF ETOBICOKE CREEK		
Topography	n/a	X
Infrastructure	n/a	X



68 MAIN STREET SOUTH



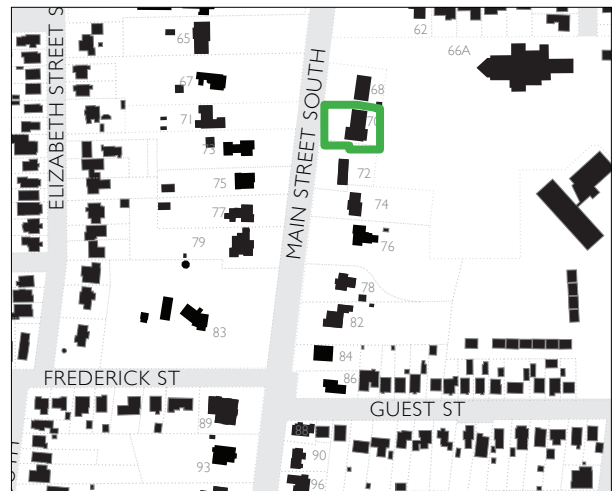
DESIGNATION STATUS		
Part IV		
Part V	Yes (Main Street South HCD)	
CONTRIBUTING BUILDING		✓
ARCHITECTURE		✓
Build Date	1956-1970	
Style	Ranch	
Estimated Alterations		
ASSOCIATION		X
Historic Owners/Occupants, Other Associations	n/a	
CONTRIBUTING LANDSCAPE		✓
SITING		X
Initial Settlement/Subdivision Plan	Settlement around Etobicoke Creek	
Current Siting	Built within the former Etobicoke Creek floodplain, development would historically have been unlikely.	
GREEN PROCESSION LANDSCAPING		
Mature Tree(s)	Mature trees within front lawn and lining side property lines.	✓
Greenery	Large grassy lawn with gravel circular driveway, bordered and obscured from view by hedges.	✓
EVIDENCE OF ETOBICOKE CREEK		
Topography	The property's slight slope away from the street reflects the historic Etobicoke Creek route behind the existing residence.	✓
Infrastructure	n/a	X



70 MAIN STREET SOUTH



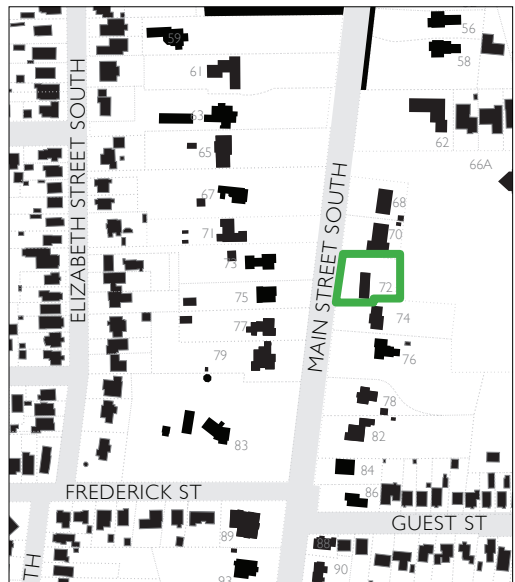
DESIGNATION STATUS		
Part IV		
Part V	Yes (Main Street South HCD)	
CONTRIBUTING BUILDING		X
ARCHITECTURE		X
Build Date	1950-1980	
Style	Ranch	
Estimated Alterations		
ASSOCIATION		X
Historic Owners/Occupants, Other Associations	n/a	
CONTRIBUTING LANDSCAPE		✓
SITING		X
Initial Settlement/ Subdivision Plan	Settlement around Etobicoke Creek	
Current Siting	Built within the former Etobicoke Creek floodplain, development would historically have been unlikely.	
GREEN PROCESSION LANDSCAPING		
Mature Tree(s)	Mature and semi-mature trees partially obscure views of residence.	✓
Greenery	Large grassy lawn with gravel circular driveway by the street, and secondary gravel driveway sloping down to integrated garages.	✓
EVIDENCE OF ETOBICOKE CREEK		
Topography	The property's slope away from the street reflects the historic Etobicoke Creek route behind the residence.	✓
Infrastructure	n/a	X



72 MAIN STREET SOUTH



DESIGNATION STATUS		
Part IV		
Part V	Yes (Main Street South HCD)	
CONTRIBUTING BUILDING		✓
ARCHITECTURE		✓
Build Date	1957	
Style	Mid-Century Modern	
Estimated Alterations		
ASSOCIATION		X
Historic Owners/Occupants, Other Associations	n/a	
CONTRIBUTING LANDSCAPE		✓
SITING		X
Initial Settlement/Subdivision Plan	Settlement around Etobicoke Creek	
Current Siting	Built within the former Etobicoke Creek floodplain, development would historically have been unlikely.	
GREEN PROCESSION LANDSCAPING		
Mature Tree(s)	Mature trees present within lawn.	✓
Greenery	Large open grassy lawn, with a large gravel parking pad at the north edge of the property. Shrubbery and planted landscaped beds throughout the lawn.	✓
EVIDENCE OF ETOBICOKE CREEK		
Topography	The property's slope away from the street reflects the historic Etobicoke Creek route behind the residence.	✓
Infrastructure		X



74 MAIN STREET SOUTH



DESIGNATION STATUS	
Part IV	
Part V	Yes (Main Street South HCD)
CONTRIBUTING BUILDING	
ARCHITECTURE	X
Build Date	1965-1980
Style	New Traditional
Estimated Alterations	
ASSOCIATION	
Historic Owners/ Occupants, Other Associations	n/a
CONTRIBUTING LANDSCAPE	
SITING	X
Initial Settlement/ Subdivision Plan	Settlement around Etobicoke Creek
Current Siting	Set on the edge of the historic Etobicoke Creek floodplain, where development would historically have been unlikely.
GREEN PROCESSION LANDSCAPING	
Mature Tree(s)	Mature trees present on lawn.
Greenery	Large open grassy lawn and a paved circular driveway, with a straight paved extension toward the garages at the north edge of the property.
EVIDENCE OF ETOBICOKE CREEK	
Topography	n/a
Infrastructure	n/a



76 MAIN STREET SOUTH



DESIGNATION STATUS	
Part IV	
Part V	Yes (Main Street South HCD)
CONTRIBUTING BUILDING	
	✓
ARCHITECTURE	
	✓
Build Date	1875
Style	Vernacular Victorian
Estimated Alterations	
ASSOCIATION	
	✓
Historic Owners/ Occupants, Other Associations	The Clark family, the Austin family and the Jackson family. Former Brampton Mayor F. W. Wegenast.
CONTRIBUTING LANDSCAPE	
	✓
SITING	
	✓
Initial Settlement/ Subdivision Plan	Settlement around Etobicoke Creek
Current Siting	Set back from the street.
GREEN PROCESSION LANDSCAPING	
Mature Tree(s)	Mature trees present at the street edge and along the driveway.
	✓
Greenery	Very large open grassy lawn with small straight driveway at the south property edge.
	✓
EVIDENCE OF ETOBICOKE CREEK	
Topography	n/a
	X
Infrastructure	n/a
	X



78 MAIN STREET SOUTH



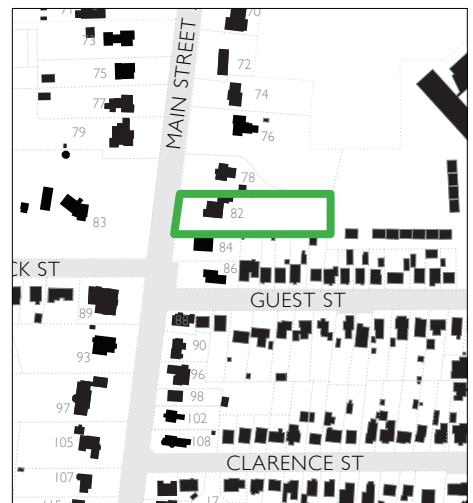
DESIGNATION STATUS		
Part IV		
Part V	Yes (Main Street South HCD)	
CONTRIBUTING BUILDING		✓
ARCHITECTURE		✓
Build Date	1920-1940	
Style	Edwardian	
Estimated Alterations		
ASSOCIATION		X
Historic Owners/Occupants, Other Associations	n/a	
CONTRIBUTING LANDSCAPE		✓
SITING		✓
Initial Settlement/ Subdivision Plan	Settlement around Etobicoke Creek	
Current Siting	Set back from the street.	
GREEN PROCESSION LANDSCAPING		
Mature Tree(s)	Mature trees present throughout lawn.	✓
Greenery	Formally manicured gardens with wrought-iron fencing, hedge-lined curvilinear paths and landscaped beds/planters by the street. Driveway at the south property edge curves into a parking pad screened with hedges by the residence.	✓
EVIDENCE OF ETOBICOKE CREEK		
Topography	n/a	X
Infrastructure	n/a	X



82 MAIN STREET SOUTH



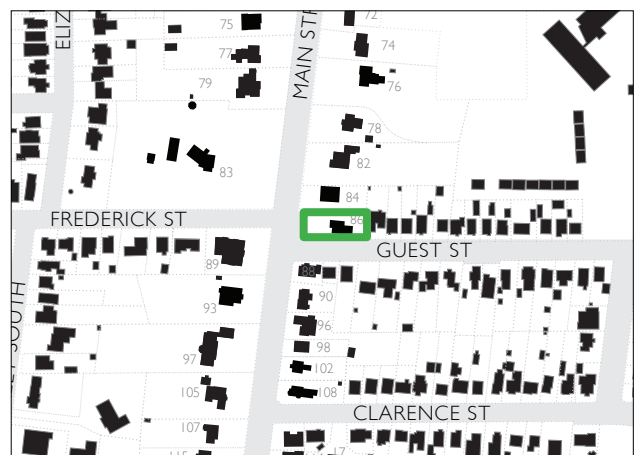
DESIGNATION STATUS	
Part IV	
Part V	Yes (Main Street South HCD)
CONTRIBUTING BUILDING	
ARCHITECTURE	✓
Build Date	1920-1940
Style	Revival (Tudor)
Estimated Alterations	Windows have been replaced, and quoining is not original. Current stucco and stone cladding is likely not original.
ASSOCIATION	
Historic Owners/Occupants, Other Associations	n/a
CONTRIBUTING LANDSCAPE	
SITING	✓
Initial Settlement/ Subdivision Plan	Settlement around Etobicoke Creek
Current Siting	Set slightly back from the street.
GREEN PROCESSION LANDSCAPING	
Mature Tree(s)	Mature trees present throughout lawn. ✓
Greenery	Paved circular driveway with grassy lawn on each side. ✓
EVIDENCE OF ETOBICOKE CREEK	
Topography	n/a
Infrastructure	n/a



84 MAIN STREET SOUTH



DESIGNATION STATUS	
Part IV	
Part V	Yes (Main Street South HCD)
CONTRIBUTING BUILDING	
ARCHITECTURE	✓
Build Date	1860
Style	Ontario Farmhouse
Estimated Alterations	Three gable dormers are later additions. Building original exhibited Gothic Revival/ Ontario Farmhouse style, but alterations over time introduced a Georgian influence.
ASSOCIATION	
Historic Owners/Occupants, Other Associations	n/a
CONTRIBUTING LANDSCAPE	
SITING	✓
Initial Settlement/ Subdivision Plan	Settlement around Etobicoke Creek
Current Siting	Set slightly back from the street.
GREEN PROCESSION LANDSCAPING	
Mature Tree(s)	Mature trees present in front and side yard.
Greenery	Open grassy lawn. Small straight paved driveway at south edge.
EVIDENCE OF ETOBICOKE CREEK	
Topography	n/a
Infrastructure	n/a



86 MAIN STREET SOUTH



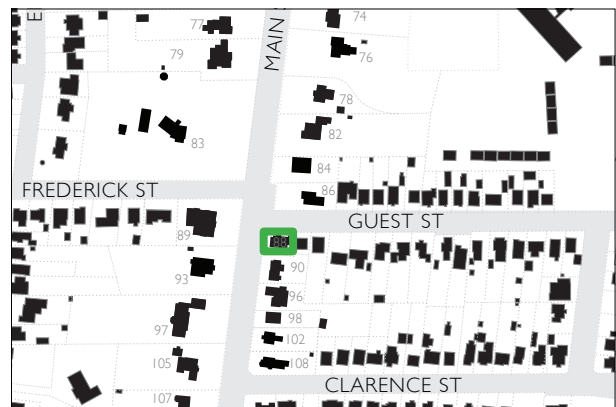
DESIGNATION STATUS		
Part IV		
Part V	Yes (Main Street South HCD)	
CONTRIBUTING BUILDING		✓
ARCHITECTURE		✓
Build Date	1900	
Style	Edwardian	
Estimated Alterations		
ASSOCIATION		X
Historic Owners/Occupants, Other Associations	n/a	
CONTRIBUTING LANDSCAPE		✓
SITING		✓
Initial Settlement/ Subdivision Plan	Settlement around Etobicoke Creek	
Current Siting	Corner lot, set back from the street.	
GREEN PROCESSION LANDSCAPING		
Mature Tree(s)	Many mature trees present throughout lawn.	✓
Greenery	Very large open grassy lawn. Small long paved pedestrian path to house.	✓
EVIDENCE OF ETOBICOKE CREEK		
Topography	n/a	X
Infrastructure	n/a	X



88 MAIN STREET SOUTH



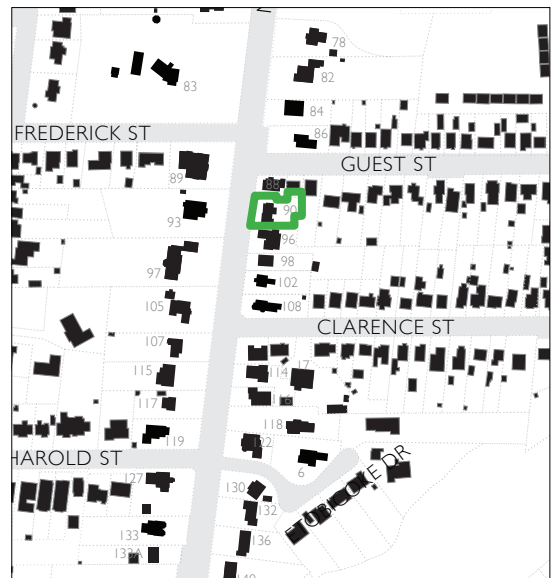
DESIGNATION STATUS		
Part IV		
Part V	Yes (Main Street South HCD)	
CONTRIBUTING BUILDING		X
ARCHITECTURE		X
Build Date	1945-1980	
Style	Ranch	
Estimated Alterations		
ASSOCIATION		X
Historic Owners/Occupants, Other Associations	n/a	
CONTRIBUTING LANDSCAPE		✓
SITING		✓
Initial Settlement/ Subdivision Plan	1854 Guest Plan	
Current Siting	Corner lot, very limited setback from street.	
GREEN PROCESSION LANDSCAPING		
Mature Tree(s)	Two semi-mature trees present in yard.	X
Greenery	Small open grassy lawn with some plantings by the house. Small paved parking pads on each side of lawn.	✓
EVIDENCE OF ETOBICOKE CREEK		
Topography	n/a	X
Infrastructure	n/a	X



90 MAIN STREET SOUTH



DESIGNATION STATUS		
Part IV		
Part V	Yes (Main Street South HCD)	
CONTRIBUTING BUILDING		X
ARCHITECTURE		X
Build Date	1940-1955	
Style	Wartime Housing	
Estimated Alterations	Ontario Farmhouse-style centred cross gable may be a later addition. Shed dormer may also be an addition. South-side extension is a later addition (1960-70s).	
ASSOCIATION		X
Historic Owners/Occupants, Other Associations	n/a	
CONTRIBUTING LANDSCAPE		✓
SITING		✓
Initial Settlement/ Subdivision Plan	1854 Guest Plan	
Current Siting	Very limited setback from the street.	
GREEN PROCESSION LANDSCAPING		
Mature Tree(s)	n/a	X
Greenery	Full front yard covered with paved parking pad, with very minimal grass at edges.	X
EVIDENCE OF ETOBICOKE CREEK		
Topography	n/a	X
Infrastructure	n/a	X



96 MAIN STREET SOUTH



DESIGNATION STATUS	
Part IV	
Part V	Yes (Main Street South HCD)
CONTRIBUTING BUILDING	
ARCHITECTURE	✓
Build Date	1900-1940
Style	Vernacular Victorian
Estimated Alterations	South side extension is a later addition (both the steeply-pitched cross hip and the front-facing garage). Porch enclosure is not original.
ASSOCIATION	
Historic Owners/Occupants, Other Associations	n/a
CONTRIBUTING LANDSCAPE	
SITING	✓
Initial Settlement/ Subdivision Plan	1854 Guest Plan
Current Siting	Very limited setback from the street.
GREEN PROCESSION LANDSCAPING	
Mature Tree(s)	Trees of varying maturity present throughout lawn.
Greenery	Small open grassy lawn, with predominant paved parking pad at south end.
EVIDENCE OF ETOBICOKE CREEK	
Topography	n/a
Infrastructure	n/a



98 MAIN STREET SOUTH



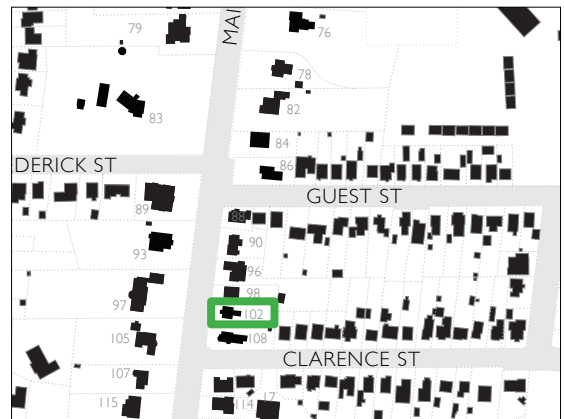
DESIGNATION STATUS	
Part IV	
Part V	Yes (Main Street South HCD)
CONTRIBUTING BUILDING	X
ARCHITECTURE	X
Build Date	1940-1955
Style	Wartime Housing
Estimated Alterations	Cladding and windows altered between 2009 and 2014.
ASSOCIATION	X
Historic Owners/Occupants, Other Associations	n/a
CONTRIBUTING LANDSCAPE	✓
SITING	✓
Initial Settlement/ Subdivision Plan	1854 Guest Plan
Current Siting	Very limited setback from the street.
GREEN PROCESSION LANDSCAPING	
Mature Tree(s)	Mature tree present in front yard. ✓
Greenery	Lawn dominated by large paved driveway and pathway, with small grassy lawn at north edge of property. X
EVIDENCE OF ETOBICOKE CREEK	
Topography	n/a X
Infrastructure	n/a X



102 MAIN STREET SOUTH



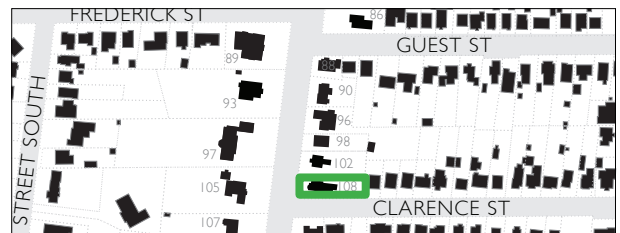
DESIGNATION STATUS	
Part IV	
Part V	Yes (Main Street South HCD)
CONTRIBUTING BUILDING	
ARCHITECTURE	✓
Build Date	1870-1888
Style	Ontario Farmhouse
Estimated Alterations	Bay windows with diamond patterning are likely an alteration (perhaps c.1910-20s) Front portico is a later addition. Building has been reclad in vinyl siding.
ASSOCIATION	
Historic Owners/Occupants, Other Associations	X
CONTRIBUTING LANDSCAPE	
SITING	✓
Initial Settlement/ Subdivision Plan	1854 Guest Plan
Current Siting	Very limited setback from the street.
GREEN PROCESSION LANDSCAPING	
Mature Tree(s)	Trees of varying maturity present in small grassy areas in front yard. ✓
Greenery	Very large paved circular driveway. Front yard dominated by paving. X
EVIDENCE OF ETOBICOKE CREEK	
Topography	n/a X
Infrastructure	n/a X



108 MAIN STREET SOUTH



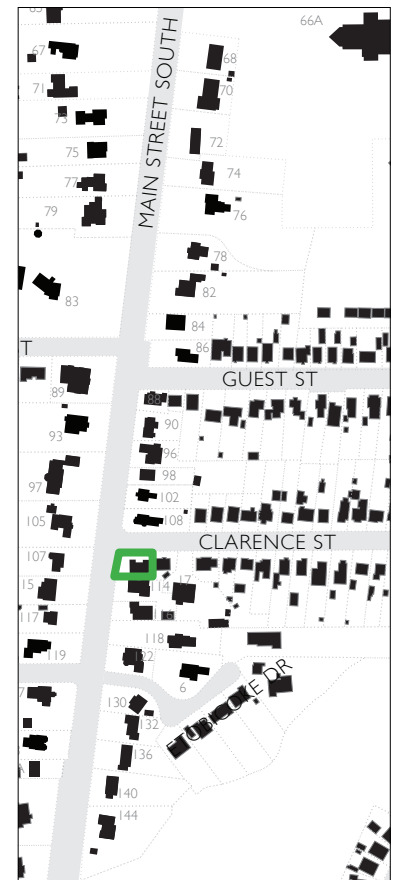
DESIGNATION STATUS		
Part IV		
Part V	Yes (Main Street South HCD)	
CONTRIBUTING BUILDING		✓
ARCHITECTURE		✓
Build Date	1887	
Style	Italianate	
Estimated Alterations		
ASSOCIATION		X
Historic Owners/Occupants, Other Associations	n/a	
CONTRIBUTING LANDSCAPE		✓
SITING		✓
Initial Settlement/ Subdivision Plan	1854 Guest Plan	
Current Siting	Corner lot, very limited setback from street.	
GREEN PROCESSION LANDSCAPING		
Mature Tree(s)	Mature trees present at corner of lot.	✓
Greenery	Small grassy lawn, but street frontage dominated by large paved parking pad.	X
EVIDENCE OF ETOBICOKE CREEK		
Topography	n/a	X
Infrastructure	n/a	X



13 CLARENCE STREET



DESIGNATION STATUS		
Part IV		
Part V	Yes (Main Street South HCD)	
CONTRIBUTING BUILDING		X
ARCHITECTURE		X
Build Date	1950-1970	
Style	Ranch	
Estimated Alterations		
ASSOCIATION		X
Historic Owners/Occupants, Other Associations	n/a	
CONTRIBUTING LANDSCAPE		✓
SITING		✓
Initial Settlement/ Subdivision Plan	1873 Jones Plan	
Current Siting	Corner lot, set slightly back from Main Street South (side yard setback).	
GREEN PROCESSION LANDSCAPING		
Mature Tree(s)	Semi-mature tree present in side yard. Mature trees and shrubbery within fence along side yard.	✓
Greenery	Partially fenced-in grassy lawn.	✓
EVIDENCE OF ETOBICOKE CREEK		
Topography	n/a	X
Infrastructure	n/a	X



114 MAIN STREET SOUTH



DESIGNATION STATUS	
Part IV	
Part V	Yes (Main Street South HCD)
CONTRIBUTING BUILDING	
	✓
ARCHITECTURE	
	✓
Build Date	1950
Style	Ranch
Estimated Alterations	
ASSOCIATION	
	✓
Historic Owners/Occupants, Other Associations	<p>Built as a centrepiece model home by the Credit Valley Stone Company.</p> <p>Some of the stone used came from the Pottsville sandstone quarry, the supplier for Frank Lloyd Wright's "Fallingwater" in Pennsylvania.</p> <p>Believed to be the first post-war Ranch-style home built in Brampton.</p>
CONTRIBUTING LANDSCAPE	
	✓
SITING	
	✓
Initial Settlement/ Subdivision Plan	1873 Joness Plan
Current Siting	Set slightly back from the street.
GREEN PROCESSION LANDSCAPING	
Mature Tree(s)	Mature trees in yard partially obscure views of the residence. ✓
Greenery	Large grassy lawn, with small straight paved driveway at south property edge. ✓
EVIDENCE OF ETOBICOKE CREEK	
Topography	n/a x
Infrastructure	n/a x



116 MAIN STREET SOUTH



DESIGNATION STATUS		
Part IV		
Part V	Yes (Main Street South HCD)	
CONTRIBUTING BUILDING		X
ARCHITECTURE		X
Build Date	1950-1980	
Style	Mid-Century Modern	
Estimated Alterations		
ASSOCIATION		X
Historic Owners/Occupants, Other Associations	n/a	
CONTRIBUTING LANDSCAPE		✓
SITING		✓
Initial Settlement/ Subdivision Plan	1873 Joness Plan	
Current Siting	Set slightly back from the street.	
GREEN PROCESSION LANDSCAPING		
Mature Tree(s)	Mature trees present at edges of yard.	✓
Greenery	Small grassy lawn and hedge line by the street, but front yard dominated by large parking pad of patterned pavers.	X
EVIDENCE OF ETOBICOKE CREEK		
Topography	n/a	X
Infrastructure	n/a	X



118 MAIN STREET SOUTH



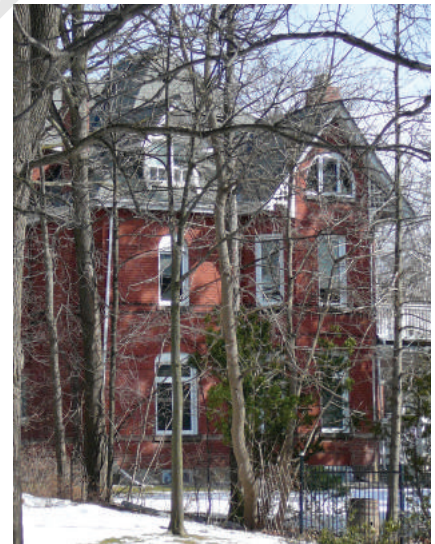
DESIGNATION STATUS		
Part IV		
Part V	Yes (Main Street South HCD)	
CONTRIBUTING BUILDING		✓
ARCHITECTURE		✓
Build Date	1890s	
Style	Queen Anne	
Estimated Alterations		
ASSOCIATION		✓
Historic Owners/Occupants, Other Associations	The Bull family	
CONTRIBUTING LANDSCAPE		✓
SITING		✓
Initial Settlement/ Subdivision Plan	Bull Estate	
Current Siting	Set very far back from the street.	
GREEN PROCESSION LANDSCAPING		
Mature Tree(s)	Mature trees present throughout lawn.	✓
Greenery	Very large grassy lawn with planted shrubbery by the street and plantings by the residence. Long paved straight driveway with small parking pad by the street.	✓
EVIDENCE OF ETOBICOKE CREEK		
Topography	n/a	X
Infrastructure	n/a	X



6 ETOBICOKE DRIVE



DESIGNATION STATUS		
Part IV		
Part V	Yes (Main Street South HCD)	
CONTRIBUTING BUILDING		✓
ARCHITECTURE		✓
Build Date	1880-1890	
Style	Queen Anne	
Estimated Alterations	Front porch and balcony supports and balustrade appear to have been altered (perhaps c. 1910-20s). Mid-century addition to the east.	
ASSOCIATION		✓
Historic Owners/ Occupants, Other Associations	Harper Bull, three-time Brampton Mayor, and Justice of the Peace. Original address is 122 Main St. S., although the front elevation is oriented toward the south, away from the street. Built in the same style as the adjacent Queen Anne residence at 118 Main St. S.	
CONTRIBUTING LANDSCAPE		✓
SITING		✓
Initial Settlement/ Subdivision Plan	Bull Estate	
Current Siting	Set very far back from the street, with side elevation fronting onto Main St. S. Now located behind 122 Main St. S.	
GREEN PROCESSION LANDSCAPING		
Mature Tree(s)	Mature trees present throughout lawn.	✓
Greenery	Large open grassy lawn, with small circular drive in front of residence.	✓
EVIDENCE OF ETOBICOKE CREEK		
Topography	n/a	X
Infrastructure	n/a	X



122 MAIN STREET SOUTH



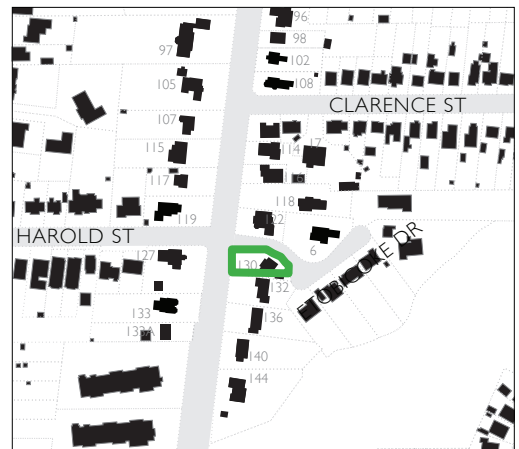
DESIGNATION STATUS		
Part IV		
Part V	Yes (Main Street South HCD)	
CONTRIBUTING BUILDING		X
ARCHITECTURE		X
Build Date	1980-2010	
Style	New Traditional	
Estimated Alterations		
ASSOCIATION		X
Historic Owners/Occupants, Other Associations	n/a	
CONTRIBUTING LANDSCAPE		✓
SITING		✓
Initial Settlement/ Subdivision Plan	1873 Jones Plan	
Current Siting	Corner lot, set slightly back from the street, consistent with properties subdivided in the Jones Plan, despite being subdivided from the Bull Estate.	
GREEN PROCESSION LANDSCAPING		
Mature Tree(s)	Mature trees present throughout lawn.	✓
Greenery	Large open grassy lawn with small pedestrian path.	✓
EVIDENCE OF ETOBICOKE CREEK		
Topography	n/a	X
Infrastructure	n/a	X



130 MAIN STREET SOUTH



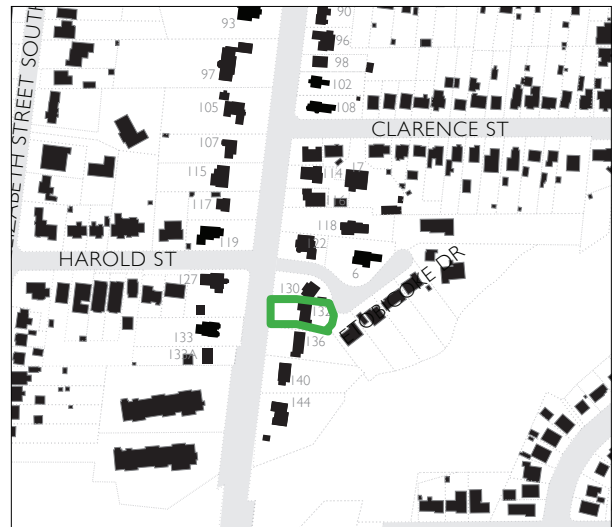
DESIGNATION STATUS		
Part IV		
Part V	Yes (Main Street South HCD)	
CONTRIBUTING BUILDING		X
ARCHITECTURE		X
Build Date	1950-1980s	
Style	New Traditional	
Estimated Alterations	Upper storey may be a later addition, but this is unclear.	
ASSOCIATION		X
Historic Owners/Occupants, Other Associations	n/a	
CONTRIBUTING LANDSCAPE		✓
SITING		X
Initial Settlement/ Subdivision Plan	1873 Jones Plan	
Current Siting	Corner lot, set slightly back from the street. Orientation partially toward Elizabeth Street marks siting as distinct from the Jones Plan.	
GREEN PROCESSION LANDSCAPING		
Mature Tree(s)	n/a	X
Greenery	Large open grassy lawn, with small driveway off the side street. Small hedges line the driveway.	✓
EVIDENCE OF ETOBICOKE CREEK		
Topography	Rolling lawn reflects the ridge above the historic Etobicoke Creek ravine behind the property.	✓
Infrastructure	n/a	X



132 MAIN STREET SOUTH



DESIGNATION STATUS		
Part IV		
Part V	Yes (Main Street South HCD)	
CONTRIBUTING BUILDING		X
ARCHITECTURE		X
Build Date	1950-1970	
Style	Ranch	
Estimated Alterations		
ASSOCIATION		X
Historic Owners/Occupants, Other Associations	n/a	
CONTRIBUTING LANDSCAPE		✓
SITING		✓
Initial Settlement/ Subdivision Plan	1873 Joness Plan	
Current Siting	Set slightly back from the street.	
GREEN PROCESSION LANDSCAPING		
Mature Tree(s)	Mature trees throughout lawn partially obscure view of residence.	✓
Greenery	Large open grassy lawn with straight paved driveway at south edge of property, with parking pad close to house. Driveway shared with 136 Main St. S.	✓
EVIDENCE OF ETOBICOKE CREEK		
Topography	Rolling lawn reflects the ridge above the historic Etobicoke Creek ravine behind the property.	✓
Infrastructure	n/a	X



136 MAIN STREET SOUTH



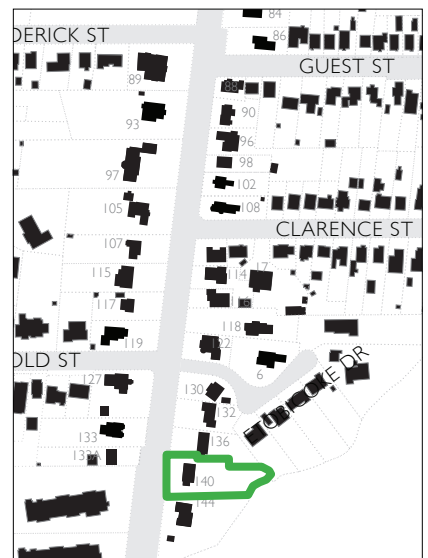
DESIGNATION STATUS		
Part IV		
Part V	Yes (Main Street South HCD)	
CONTRIBUTING BUILDING		X
ARCHITECTURE		X
Build Date	1950-1970	
Style	Ranch	
Estimated Alterations	Two front-gabled dormers may be later additions.	
ASSOCIATION		X
Historic Owners/Occupants, Other Associations	n/a	
CONTRIBUTING LANDSCAPE		✓
SITING		✓
Initial Settlement/ Subdivision Plan	1873 Joness Plan	
Current Siting	Set slightly back from the street.	
GREEN PROCESSION LANDSCAPING		
Mature Tree(s)	Two mature trees present on lawn, as well as others of varying maturity.	✓
Greenery	Front yard dominated by large paved circular driveway (north access shared with 132 Main St. S.), with very small grassy lawn at street edge.	X
EVIDENCE OF ETOBICOKE CREEK		
Topography	Rolling lawn reflects the ridge above the historic Etobicoke Creek ravine behind the property.	✓
Infrastructure	n/a	X



140 MAIN STREET SOUTH



DESIGNATION STATUS		
Part IV		
Part V	Yes (Main Street South HCD)	
CONTRIBUTING BUILDING		✓
ARCHITECTURE		✓
Build Date	1900-1940	
Style	Revival (Colonial)	
Estimated Alterations	2015-17 alterations involved recladding the chimney in stone, replacing the dormer fanlight/windows and removing the entrance transom and sidelights.	
ASSOCIATION		X
Historic Owners/ Occupants, Other Associations	n/a	
CONTRIBUTING LANDSCAPE		✓
SITING		✓
Initial Settlement/ Subdivision Plan	1873 Jones Plan	
Current Siting	Set slightly back from the street.	
GREEN PROCESSION LANDSCAPING		
Mature Tree(s)	Mature trees present throughout lawn.	✓
Greenery	Paved circular driveway and grassy lawn on each side. Planted bed at the street edge, and hedges and landscaping at the driveway edges.	✓
EVIDENCE OF ETOBICOKE CREEK		
Topography	n/a	X
Infrastructure	n/a	X



144 MAIN STREET SOUTH



DESIGNATION STATUS	
Part IV	
Part V	Yes (Main Street South HCD)
CONTRIBUTING BUILDING	
	✓
ARCHITECTURE	
	✓
Build Date	1880s
Style	Ontario Farmhouse
Estimated Alterations	Suspected to have originally been a south-facing Ontario Farmhouse, since altered to face the street (west). Significant addition to the south side has altered the massing. Quoining, window hoods and street-facing portico and sunroom are alterations.
ASSOCIATION	
	X
Historic Owners/Occupants, Other Associations	n/a
CONTRIBUTING LANDSCAPE	
	✓
SITING	
	X
Initial Settlement/ Subdivision Plan	1873 Jones Plan
Current Siting	Set slightly back from the street. Orientation estimated to have been changed from south-facing to west-facing.
GREEN PROCESSION LANDSCAPING	
Mature Tree(s)	Mature trees present throughout lawn. ✓
Greenery	Paved circular driveway and grassy lawn on each side, peppered with landscaped shrubbery. ✓
EVIDENCE OF ETOBICOKE CREEK	
Topography	Slope at south edge of the property reflects historic Etobicoke Creek route. ✓
Infrastructure	n/a X

